

## 12-1047: Recombinant Rabbit Monoclonal Antibody to CD1a / HTA1 (Mature Langerhans Cells Marker)(Clone : C1A/1506R)

<b>Clonality :</b>	Monoclonal
<b>Clone Name :</b>	C1A/1506R
<b>Application :</b>	IHC
<b>Reactivity :</b>	Human
<b>Gene :</b>	CD1A
<b>Gene ID :</b>	909
<b>Uniprot ID :</b>	P06126
<b>Format :</b>	Purified
<b>Alternative Name :</b>	Cortical thymocyte antigen CD1A, Epidermal dendritic cell marker CD1a antibody, FCB6, HTA1, T cell surface antigen T6 / Leu 6, T-Cell Surface Glycoprotein CD1A
<b>Isotype :</b>	Rabbit IgG
<b>Immunogen Information :</b>	Recombinant human full-length CD1a protein

### Description

At least five CD1 genes (CD1a, b, c, d, and e) are identified. CD1 proteins have been demonstrated to restrict T cell response to non-peptide lipid and glycolipid antigens and play a role in non-classical antigen presentation. CD1a is a non-polymorphic MHC Class 1 related cell surface glycoprotein, expressed in association with Beta-2 microglobulin. Anti-CD1a labels Langerhans cell histiocytosis (Histiocytosis X), extranodal histiocytic sarcoma, a subset of T-lymphoblastic lymphoma/leukemia, and interdigitating dendritic cell sarcoma of the lymph node. When combined with antibodies against TTF-1 and CD5, anti-CD1a is useful in distinguishing between pulmonary and thymic neoplasms since CD1a is consistently expressed in thymic lymphocytes in both typical and atypical thymomas, but only focally in 1/6 of thymic carcinomas and not in lymphocytes in pulmonary neoplasms. Anti-CD1a is reported to be a new marker for perivascular epithelial cell tumor (PEComa).

### Product Info

<b>Amount :</b>	20 µg / 100 µg
<b>Purification :</b>	Purified Ab with BSA and Azide at 200ug/ml
<b>Content :</b>	200ug/ml of Ab purified by Protein A Column. Prepared in 10mM PBS with 0.05% BSA & 0.05% azide. Also available WITHOUT BSA & azide at 1.0mg/ml.
<b>Storage condition :</b>	Store the antibody at 4°C; stable for 6 months. For long-term storage; store at -20°C. Avoid repeated freeze and thaw cycles.

### Application Note

Immunohistochemistry (Formalin-fixed) (1-2 µg/ml for 30 min at RT)(Staining of formalin-fixed tissues requires heating tissue sections in 10mM Tris with 1mM EDTA, pH 9.0, for 45 min at 95°C followed by cooling at RT for 20 minutes);

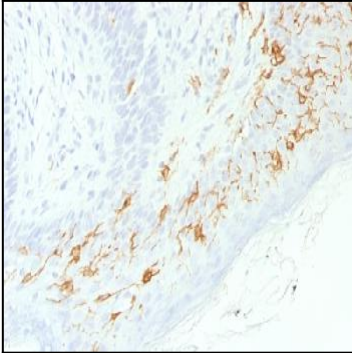


Figure 1: Formalin-fixed, paraffin-embedded human Skin stained with CD1a Rabbit Recombinant Monoclonal Antibody (C1A/1506R).

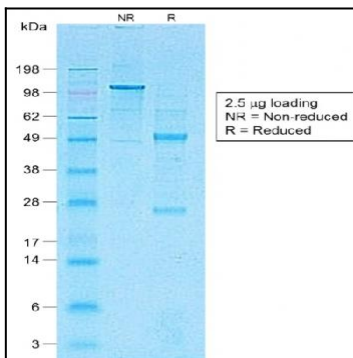


Figure 2: SDS-PAGE Analysis of Purified CD1a Rabbit Recombinant Monoclonal Antibody (C1A/1506R).