

12-1046: Recombinant Rabbit Monoclonal Antibody to Caldesmon, HMW (h-Caldesmon) (Smooth Muscle Marker) (Clone : CALD1/1424R)

Clonality :	Monoclonal
Clone Name :	CALD1/1424R
Application :	WB,IFC
Reactivity :	Human, Rat
Gene :	CALD1
Gene ID :	800
Uniprot ID :	Q05682
Format :	Purified
Alternative Name :	CAD, CALD1, Caldesmon 1 Isoform 1, Caldesmon 1 Isoform 2, Caldesmon 1 Isoform 3, Caldesmon 1 Isoform 4, Caldesmon 1 Isoform 5, CDM, HCAD, LCAD, NAG22
Isotype :	Rabbit IgG
Immunogen Information :	Recombinant human full-length CALD1 protein

Description

Recognizes a protein of 150kDa, which is identified as the high molecular weight variant of Caldesmon. Two closely related variants of human caldesmon have been identified which are different in their electrophoretic mobility and cellular distribution. The h-caldesmon variant (120-150kDa) is predominantly expressed in smooth muscle whereas l-caldesmon (70-80kDa) is found in non- muscle tissue and cells. Neither of the two variants has been detected in skeletal muscle. This MAb recognizes only the 150kDa variant (h-caldesmon) in Western blots of human aortic media extracts and is unreactive with fibroblast extracts from cultivated human foreskin. Caldesmon is a developmentally regulated protein involved in smooth muscle and non-muscle contraction.

Product Info

Amount :	20 µg / 100 µg
Purification :	Purified Ab with BSA and Azide at 200ug/ml
Content :	200ug/ml of Ab purified by Protein A/G. Prepared in 10mM PBS with 0.05% BSA & 0.05% azide. Also available WITHOUT BSA & azide at 1.0mg/ml.
Storage condition :	Store the antibody at 4°C; stable for 6 months. For long-term storage; store at -20°C. Avoid repeated freeze and thaw cycles.

Application Note

Western Blot (1-2 µg/ml); ,Immunohistology (Formalin-fixed) (1-2 µg/ml for 30 minutes at RT),(Staining of formalin-fixed tissues requires boiling tissue sections in 1mM EDTA, pH 7.5-8.5, for 10-20 min followed by cooling at RT for 20 minutes),

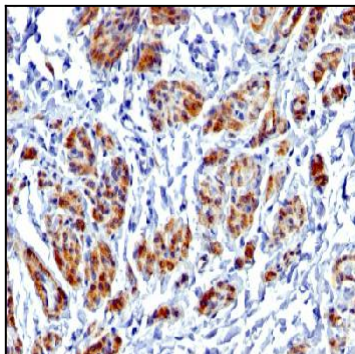


Figure 1: Formalin-fixed, paraffin-embedded human Uterus stained with Caldesmon Rabbit Recombinant Monoclonal Antibody (CALD1/1424R).

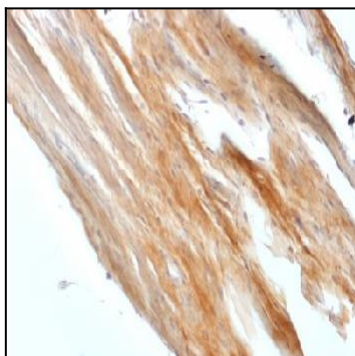


Figure 2: Formalin-fixed, paraffin-embedded Rat Uterus stained with Caldesmon Rabbit Recombinant Monoclonal Antibody (CALD1/1424R).

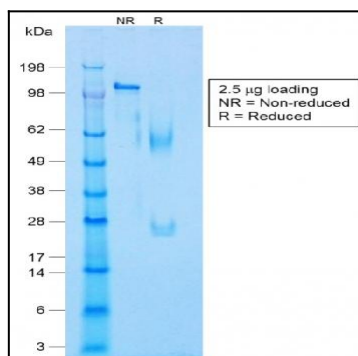


Figure 3: SDS-PAGE Analysis of Purified Caldesmon Rabbit Recombinant Monoclonal Antibody (CALD1/1424R).