

## 12-1029: Recombinant Rabbit Monoclonal Antibody to Ep-CAM / CD326 (Epithelial Marker)(Clone : EGP40/1555R)

<b>Clonality :</b>	Monoclonal
<b>Clone Name :</b>	EGP40/1555R
<b>Application :</b>	FACS,IF,IHC
<b>Reactivity :</b>	Human
<b>Gene :</b>	EPCAM
<b>Gene ID :</b>	4072
<b>Uniprot ID :</b>	P16422
<b>Format :</b>	Purified
<b>Alternative Name :</b>	Adenocarcinoma-associated Antigen, Cell Surface Glycoprotein Trop-1, EGP2, EGP314, EGP40, Epithelial Cell Adhesion Molecule, Epithelial Glycoprotein 314, ESA, KSA, TACD1, TROP1, Tumor-associated Calcium Signal Transducer 1 (TACSTD1)
<b>Isotype :</b>	Rabbit IgG
<b>Immunogen Information :</b>	A synthetic peptide (around aa 20-60) from the N-terminus of human TACSTD1 protein (exact sequence is proprietary)

### Description

Recognizes a 40-43kDa transmembrane epithelial glycoprotein, identified as epithelial specific antigen (ESA), or epithelial cellular adhesion molecule (Ep-CAM). Ep-CAM is expressed on baso-lateral cell surface in most simple epithelia and a vast majority of carcinomas. This antibody has been used to distinguish adenocarcinoma from pleural mesothelioma and hepatocellular carcinoma. It is also useful in distinguishing serous carcinomas of the ovary from mesothelioma. This epithelial antigen plays an important role as a tumor-cell marker in lymph nodes from patients with esophageal carcinoma otherwise classified as node-negative. Epithelial antigen has also been suggested as a discriminator between basal cell and baso-squamous carcinomas, and squamous cell carcinoma of the skin.

### Product Info

<b>Amount :</b>	20 µg / 100 µg
<b>Purification :</b>	Purified Ab with BSA and Azide at 200ug/ml
<b>Content :</b>	200ug/ml of Ab purified by Protein A. Prepared in 10mM PBS with 0.05% BSA & 0.05% azide. Also available WITHOUT BSA & azide at 1.0mg/ml.
<b>Storage condition :</b>	Store the antibody at 4°C; stable for 6 months. For long-term storage; store at -20°C. Avoid repeated freeze and thaw cycles.

### Application Note

Flow Cytometry (1-2 $\times$ 10<sup>5</sup>µg/million cells); Immunofluorescence (1-2 $\times$ 10<sup>5</sup>µg/ml); ,Immunohistochemistry (Formalin-fixed) (1-2 $\times$ 10<sup>5</sup>µg/ml for 30 minutes at RT),(Staining of formalin-fixed tissues requires heating tissue sections in 10mM Tris with 1mM EDTA, pH 9.0, for 45 min at 95 &degC followed by cooling at RT for 20 minutes),

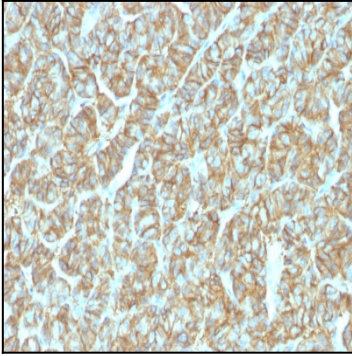


Figure 1 : Formalin-fixed, paraffin-embedded human Thyroid Carcinoma stained with Ep-CAM Recombinant Rabbit Monoclonal Antibody (EGP40/1555R).