

12-1028: Recombinant Rabbit Monoclonal Antibody to Cytokeratin 7 (Glandular and Transitional Epithelial Marker)(Clone : KRT7/1499R)

Clonality :	Monoclonal
Clone Name :	KRT7/1499R
Application :	FACS,WB,IHC
Reactivity :	Human
Gene :	KRT7
Gene ID :	3855
Uniprot ID :	P08729
Format :	Purified
Alternative Name :	CK-7, K2C7, Keratin 55K Type II Cytoskeletal, Keratin Simple Epithelial Type 1 K7, Keratin Type II Cytoskeletal 7, Krt2-7, KRT7, Sarcolectin, SCL, Type II Mesothelial Keratin K7, Type-II Keratin Kb7
Isotype :	Rabbit IgG
Immunogen Information :	Recombinant full-length human KRT7 protein

Description

It recognizes an intermediate filament protein (IFP) of 55kDa, which is identified as cytokeratin 7. This MAb is highly specific to cytokeratin 7 and shows no cross-reaction with other IFPs. Cytokeratin 7 is a basic cytokeratin, which is found in most glandular and transitional epithelia but not in the stratified squamous epithelia. Keratin 7 is expressed in the epithelial cells of ovary, lung, and breast but not of colon, prostate, or gastrointestinal tract. This MAb is highly useful in distinguishing ovarian carcinomas (keratin 7+) from colon carcinomas (keratin 7-).

Product Info

Amount :	20 µg / 100 µg
Purification :	Purified Ab with BSA and Azide at 200ug/ml
Content :	200ug/ml of Ab purified by Protein A Column. Prepared in 10mM PBS with 0.05% BSA & 0.05% azide. Also available WITHOUT BSA & azide at 1.0mg/ml.
Storage condition :	Store the antibody at 4°C; stable for 6 months. For long-term storage; store at -20°C. Avoid repeated freeze and thaw cycles.

Application Note

Flow Cytometry (1-2 \times 10⁵µg/million cells); Western Blot (1-2 \times 10⁵µg/ml);Immunohistochemistry (Formalin-fixed) (1-2 \times 10⁵µg/ml for 30 minutes at RT)(Staining of formalin-fixed tissues is enhanced by heating tissue sections in 10mM Tris with 1mM EDTA, pH 9.0 for 45 min at 95 \times degC followed by cooling at RT for 20 minutes)



Figure 1: Formalin-fixed, paraffin-embedded human Oviduct stained with Cytokeratin 7 Rabbit Recombinant Monoclonal Antibody (KRT7/1499R).

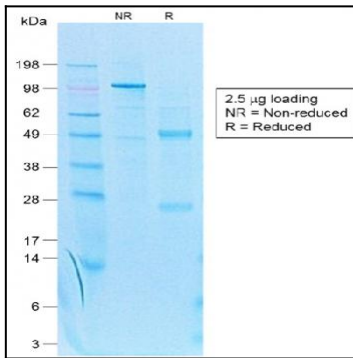


Figure 2: SDS-PAGE Analysis Purified Cytokeratin 7 Rabbit Recombinant Monoclonal Antibody (KRT7/1499R).