

## 12-1006: Recombinant Mouse Monoclonal Antibody to Ep-CAM / CD326 (Epithelial Marker)(Clone : rMOC-31)

<b>Clonality :</b>	Monoclonal
<b>Clone Name :</b>	rMOC-31
<b>Application :</b>	FACS,IF,WB,IHC
<b>Reactivity :</b>	Human
<b>Gene :</b>	EPCAM
<b>Gene ID :</b>	4072
<b>Uniprot ID :</b>	P16422
<b>Format :</b>	Purified
<b>Alternative Name :</b>	Adenocarcinoma-associated Antigen, Cell Surface Glycoprotein Trop-1, EGP2, EGP314, EGP40, Epithelial Cell Adhesion Molecule, Epithelial Glycoprotein 314, ESA, KSA, TACD1, TROP1, Tumor-associated Calcium Signal Transducer 1 (TACSTD1), ECS-1, Epidermal Surface Antigen 1, ESA1, FLOT2, Flotillin-2, Membrane Component, Chromosome 17, Surface Marker-1 (M17S1), REG-1, Reggie-1, Reggie-2
<b>Isotype :</b>	Mouse IgG1, kappa
<b>Immunogen Information :</b>	Neuraminidase treated GLS-1 human small cell lung carcinoma cells

### Description

Binding epitope of this antibody is located in the first EGF-like repeat domain (EGF1) between amino acids 27-59 of Ep-CAM. EGP40 is a 40-43kDa transmembrane epithelial glycoprotein, also identified as epithelial specific antigen (ESA), or epithelial cellular adhesion molecule (Ep-CAM). It is expressed on baso-lateral cell surface in most simple epithelia and a vast majority of carcinomas with the exception of adult squamous epithelium, hepatocytes and gastric epithelial cells. This antibody has been used to distinguish adenocarcinoma from pleural mesothelioma and hepatocellular carcinoma. This antibody is also useful in distinguishing serous carcinomas of the ovary from mesothelioma.

### Product Info

<b>Amount :</b>	20 µg / 100 µg
<b>Purification :</b>	Purified Ab with BSA and Azide at 200ug/ml
<b>Content :</b>	200ug/ml of recombinant MAb purified by Protein A/G. Prepared in 10mM PBS with 0.05% BSA & 0.05% azide. Also available WITHOUT BSA & azide at 1.0mg/ml.
<b>Storage condition :</b>	Store the antibody at 4°C; stable for 6 months. For long-term storage; store at -20°C. Avoid repeated freeze and thaw cycles.

### Application Note

Flow Cytometry (1-2 $\times$ 10<sup>5</sup> µg/million cells); Immunofluorescence (1-2 $\times$ 10<sup>5</sup> µg/ml); Western Blot (1-2 $\times$ 10<sup>5</sup> µg/ml); Immunohistochemistry (Formalin-fixed) (1-2 $\times$ 10<sup>5</sup> µg/ml for 30 minutes at RT),(Staining of formalin-fixed tissues requires heating tissue sections in 10mM Tris with 1mM EDTA, pH 9.0, for 45 min at 95 °C followed by cooling at RT for 20 minutes)

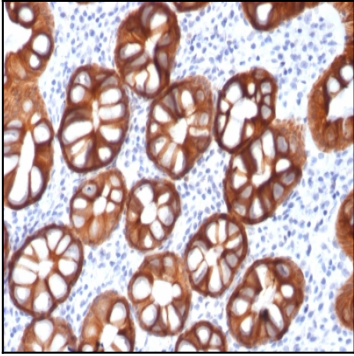


Figure 1 : Formalin-fixed, paraffin-embedded Human Colon Carcinoma stained with Ep-CAM Recombinant Mouse Monoclonal Antibody (rMOC-31).