

11-201-PE: Rabbit IgG Isotype control- PE Conjugated

Clonality : Polyclonal
Application : ELISA,FACS
Conjugate : PE
Isotype : Rabbit IgG

Product Info

Amount : 100 Tests
Purification : Affinity Chromatography
Content : 0.04mg/ml in PBS containing 0.05% Azide
Storage condition : Store the Isotype control at 4°C, stable for 6 months.

Application Note

Flow Cytometric analysis- 2.5-5 $\mu\text{l}/10^6$

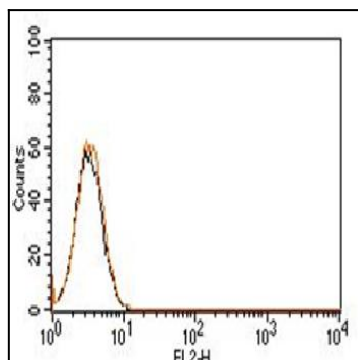


Figure-1: Cell surface flow analysis of PE conjugated Rabbit IgG Isotype control in Jurkat Cell line using 5 $\mu\text{l}/10^6$ cells. Black represent cell alone, red represent Rabbit IgG Isotype control conjugated with PE (Cat No.-11-201-PE).

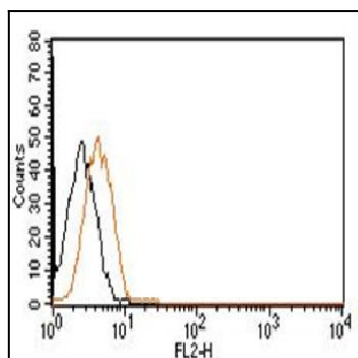


Figure-2: Cell surface flow analysis of PE conjugated Rabbit IgG Isotype control in MCF-7 Cell line using 5 $\mu\text{l}/10^6$ cells. Black represent cell alone, red represent Rabbit IgG Isotype control conjugated with PE (Cat No.-11-201-PE).

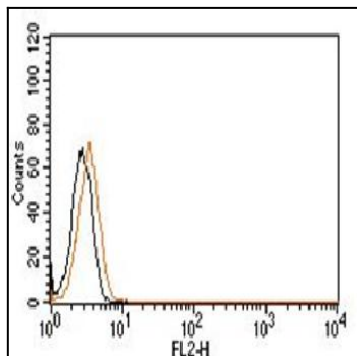


Figure-3: Cell surface flow analysis of PE conjugated Rabbit IgG Isotype control in EL-4 Cell line using 5 $\mu\text{l}/10^6$ cells. Black represent cell alone, red represent Rabbit IgG Isotype control conjugated with PE (Cat No.-11-201-PE).

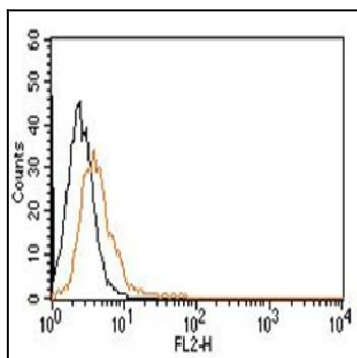


Figure-4: Cell surface flow analysis of PE conjugated Rabbit IgG Isotype control in 3T3 Cell line using 5 $\mu\text{l}/10^6$ cells. Black represent cell alone, red represent Rabbit IgG Isotype control conjugated with PE (Cat No.-11-201-PE).