

11-201: Rabbit IgG Isotype Control

Clonality : Polyclonal
Application : ELISA, FACS
Isotype : Rabbit IgG

Product Info

Amount : 25 µg / 100 µg
Purification : Affinity Chromatography
Content : 0.5 mg/ml, Supplied in PBS/Sodium azide
Storage condition : Store the Rabbit isotype control at 4°C, stable for 6 months. For long-term storage, store at -20°C. Avoid repeated freeze and thaw cycles.

Application Note

Flow Cytometric analysis- 0.5-1 µg/10⁶ cells

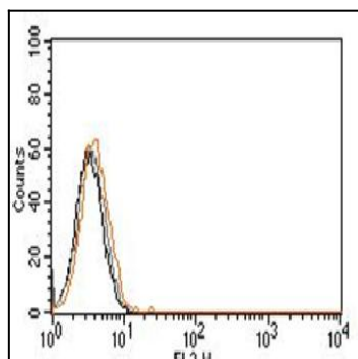


Figure-1: Cell surface flow analysis of Rabbit IgG Isotype control in Jurkat Cell line using 0.5/10⁶ cells. Black represent cell alone, grey represent secondary antibody control and orange represent Rabbit IgG Isotype with anti-rabbit secondary antibody conjugated with PE (Cat No.-11-201).

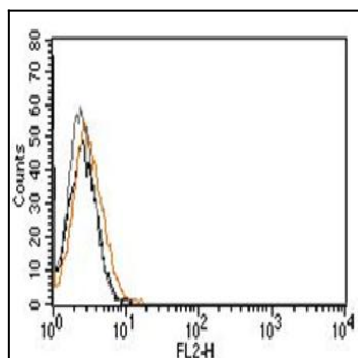


Figure-2: Cell surface flow analysis of Rabbit IgG Isotype control in MCF-7 Cell line using 0.5/10⁶ cells. Black represent cell alone, grey represent secondary antibody control and orange represent Rabbit IgG Isotype with anti-rabbit secondary antibody conjugated with PE (Cat No.-11-201).

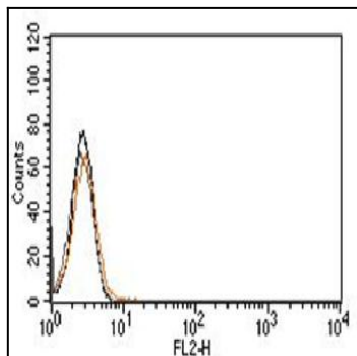


Figure-3: Cell surface flow analysis of Rabbit IgG Isotype control in EL-4 Cell line using 0.5/10⁶ cells. Black represent cell alone, grey represent secondary antibody control and orange represent Rabbit IgG Isotype with anti-rabbit secondary antibody conjugated with PE (Cat No.-11-201).

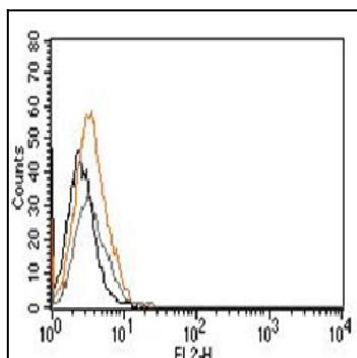


Figure-4: Cell surface flow analysis of Rabbit IgG Isotype control in 3T3 Cell line using 0.5/10⁶ cells. Black represent cell alone, grey represent secondary antibody control and orange represent Rabbit IgG Isotype with anti-rabbit secondary antibody conjugated with PE (Cat No.-11-201).