

## 10-7611: Rabbit Monoclonal Antibody to EpCAM (Clone: ABM53D8)

<b>Clonality :</b>	Monoclonal
<b>Clone Name :</b>	ABM53D8
<b>Application :</b>	WB
<b>Reactivity :</b>	Human
<b>Gene :</b>	EPCAM
<b>Gene ID :</b>	4072
<b>Uniprot ID :</b>	P16422
<b>Format :</b>	Purified
<b>Alternative Name :</b>	EPCAM,GA733-2,M1S2,M4S1,MIC18,TACSTD1,TROP1
<b>Isotype :</b>	Rabbit IgG
<b>Immunogen Information :</b>	A partial length recombinant EpCam protein (amino acid 56-267) was used as immunogen for this antibody.

### Description

EpCAM (epithelial specific antigen) is an ~40 kDa transmembrane glycoprotein involved in a number of cellular processes including adhesion, proliferation, maintenance of stemness, migration and invasion. EpCAM is expressed on most, but not all, normal epithelia and their corresponding malignancies. Although the role of EpCAM expression in tumorigenesis remains to be fully elucidated, EpCAM may downregulate immunity and help tumors actively escape from immune surveillance.

### Product Info

<b>Amount :</b>	25 µg / 100 µg
<b>Purification :</b>	Protein G Chromatography
<b>Content :</b>	25 µg in 50 µl/100 µg in 200 µl PBS containing 0.05% BSA and 0.05% sodium azide. Sodium azide is highly toxic.
<b>Storage condition :</b>	Store the antibody at 4°C; stable for 6 months. For long-term storage; store at -20°C. Avoid repeated freeze and thaw cycles.

### Application Note

Western blot analysis: 2-4 µg/ml

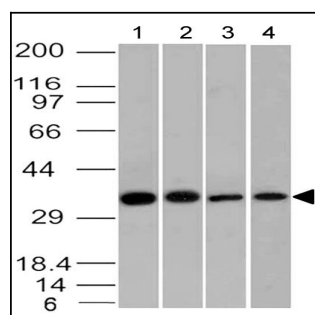


Fig-1: Western blot analysis of EpCAM. Anti- EpCAM antibody (Clone: ABM53D8) was used at 2 µg/ml on Raji, HCT116, Molt-4 and Ramos lysates.