

35-1869: Polyclonal Antibody to PDP1 (Ab-381)

Clonality :	Polyclonal
Application :	WB
Reactivity :	Human,Mouse,Rat
Gene :	PDP1
Gene ID :	54704
Uniprot ID :	Q9P0J1
Format :	Purified
Alternative Name :	PDP,PPM2C
Isotype :	Rabbit IgG
Immunogen Information :	Peptide sequence around aa.379~383 (N-E-Y-T-K) derived from Human PDP1 .

Description

Catalyzes the dephosphorylation and concomitant reactivation of the alpha subunit of the E1 component of the pyruvate dehydrogenase complex. Hu R.-M., Han Z.-G., Song H.-D., Peng Y.-D., Huang Q.-H., Ren S.-X., Gu Y.-J., Huang C.-H., Li Y.-B., Jiang C.-L., Fu G., Zhang Q.-H., Gu B.-W., Dai M., Mao Y.-F., Gao G.-F., Rong R., Ye M. Chen J.-L. Proc. Natl. Acad. Sci. U.S.A. 97:9543-9548(2000)

Product Info

Amount :	50 µl / 100 µl
Content :	Supplied at 1.0mg/mL in phosphate buffered saline (without Mg ²⁺ and Ca ²⁺), pH 7.4, 150mM NaCl, 0.02% sodium azide and 50% glycerol.
Storage condition :	Store the antibody at 4°C, stable for 6 months. For long-term storage, store at -20°C. Avoid repeated freeze and thaw cycles.

Application Note

Western blotting:1:500~1:1000

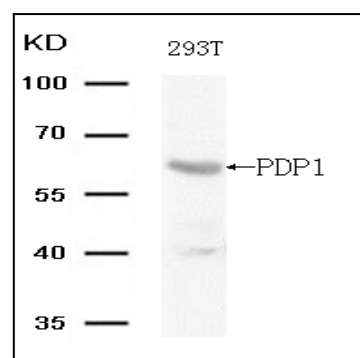


Figure 1: Western blot analysis of extracts from 293T cells using PDP1 (Ab-381) Antibody, 35-1869 .