

35-1868: Polyclonal Antibody to SKP2 (Ab-64)

Clonality :	Polyclonal
Application :	WB
Reactivity :	Human
Gene :	SKP2
Gene ID :	6502
Uniprot ID :	Q13309
Format :	Purified
Alternative Name :	FBXL1
Isotype :	Rabbit IgG
Immunogen Information :	Peptide sequence around aa.62~66 (P-E-S-P-P) derived from Human SKP2.

Description

Substrate recognition component of a SCF (SKP1-CUL1-F-box protein) E3 ubiquitin-protein ligase complex which mediates the ubiquitination and subsequent proteasomal degradation of target proteins involved in cell cycle progression, signal transduction and transcription. Specifically recognizes phosphorylated CDKN1B/p27kip and is involved in regulation of G1/S transition. Degradation of CDKN1B/p27kip also requires CKS1. Recognizes target proteins ORC1, CDT1, RBL2, KMT2A/MLL1, CDK9, RAG2, FOXO1, UBP43, and probably MYC, TOB1 and TAL1. Degradation of TAL1 also requires STUB1. Recognizes CDKN1A in association with CCNE1 or CCNE2 and CDK2. Promotes ubiquitination and destruction of CDH1 in a CK1-Dependent Manner, thereby regulating cell migration.

Product Info

Amount :	50 μ l / 100 μ l
Content :	Supplied at 1.0mg/mL in phosphate buffered saline (without Mg ²⁺ and Ca ²⁺), pH 7.4, 150mM NaCl, 0.02% sodium azide and 50% glycerol.
Storage condition :	Store the antibody at 4°C, stable for 6 months. For long-term storage, store at -20°C. Avoid repeated freeze and thaw cycles.

Application Note

Western blotting: 1:500~1:1000

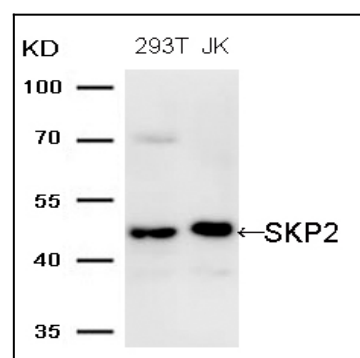


Figure 1: Western blot analysis of extracts from 293T and JK cells using SKP2 (Ab-64) Antibody 35-1868 .