

## 35-1866: Polyclonal Antibody to DLC1 (Ab-868)

<b>Clonality :</b>	Polyclonal
<b>Application :</b>	WB
<b>Reactivity :</b>	Human
<b>Gene :</b>	DLC1
<b>Gene ID :</b>	10395
<b>Uniprot ID :</b>	Q96QB1
<b>Format :</b>	Purified
<b>Alternative Name :</b>	ARHGAP7, KIAA1723, STARD12
<b>Isotype :</b>	Rabbit IgG
<b>Immunogen Information :</b>	Peptide sequence around aa.866~870 (R-N-S-S-S) derived from Human DLC1.

### Description

Functions as a GTPase-activating protein for the small GTPases RHOA, RHOB, RHOC and CDC42, terminating their downstream signaling. This induces morphological changes and detachment through cytoskeletal reorganization, playing a critical role in biological processes such as cell migration and proliferation. Also functions in vivo as an activator of the phospholipase PLCD1. Active DLC1 increases cell migration velocity but reduces directionality.

### Product Info

<b>Amount :</b>	50 $\mu$ l / 100 $\mu$ l
<b>Content :</b>	Supplied at 1.0mg/mL in phosphate buffered saline (without Mg <sup>2+</sup> and Ca <sup>2+</sup> ), pH 7.4, 150mM NaCl, 0.02% sodium azide and 50% glycerol.
<b>Storage condition :</b>	Store the antibody at 4°C, stable for 6 months. For long-term storage, store at -20°C. Avoid repeated freeze and thaw cycles.

### Application Note

Western blotting: 1:500~1:1000

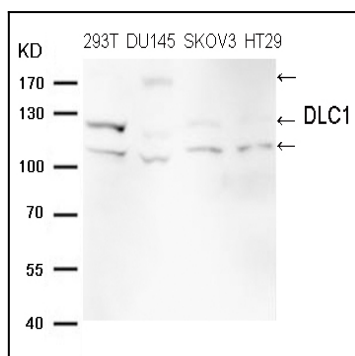


Figure 1: Western blot analysis of extracts from 293T, DU145, SKOV3 and HT29 cells using DLC1 (Ab-868) Antibody 35-1866 .