

35-1862: Polyclonal Antibody to PSMA

Clonality :	Polyclonal
Application :	WB
Reactivity :	Human
Gene :	FOLH1
Gene ID :	2346
Uniprot ID :	Q04609
Format :	Purified
Alternative Name :	FGCP, Folate hydrolase 1, FOLH, FOLH1, GCP2
Isotype :	Rabbit IgG
Immunogen Information :	Peptide sequence around aa.738~750 (A-A-E-T-L) derived Human from PSMA.

Description

Has both folate hydrolase and N-acetylated-alpha-linked-acidic dipeptidase (NAALADase) activity. Has a preference for tri-alpha-glutamate peptides. In the intestine, required for the uptake of folate. In the brain, modulates excitatory neurotransmission through the hydrolysis of the neuropeptide, N-aceylaspartyglutamate (NAAG), thereby releasing glutamate. Isoform PSM-4 and isoform PSM-5 would appear to be physiologically irrelevant. Involved in prostate tumor progression. Qin B et al. Identification of a LNCaP-specific binding peptide using phage display. Pharm Res 28:2422-34 (2011)

Product Info

Amount :	50 μ l / 100 μ l
Content :	Supplied at 1.0mg/mL in phosphate buffered saline (without Mg ²⁺ and Ca ²⁺), pH 7.4, 150mM NaCl, 0.02% sodium azide and 50% glycerol.
Storage condition :	Store the antibody at 4°C, stable for 6 months. For long-term storage, store at -20°C. Avoid repeated freeze and thaw cycles.

Application Note

Western blotting: 1:500~1:1000

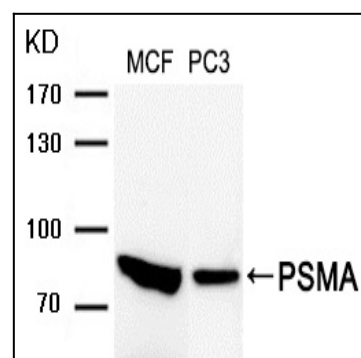


Figure 1: Western blot analysis of extracts from MCF and PC3 cells using PSMA Antibody, 35-1862 .