

## 35-1855: Polyclonal Antibody to Caveolin-2

<b>Clonality :</b>	Polyclonal
<b>Application :</b>	WB
<b>Reactivity :</b>	Human
<b>Gene :</b>	CAV2
<b>Gene ID :</b>	858
<b>Uniprot ID :</b>	P51636
<b>Format :</b>	Purified
<b>Alternative Name :</b>	CAV2
<b>Isotype :</b>	Rabbit IgG
<b>Immunogen Information :</b>	Antibodies were produced by immunizing rabbits with synthetic peptide and KLH conjugates. Antibodies were purified by affinity-chromatography using epitope-specific peptide.

### Description

May act as a scaffolding protein within caveolar membranes. Interacts directly with G-protein alpha subunits and can functionally regulate their activity. Acts as an accessory protein in conjunction with CAV1 in targeting to lipid rafts and driving caveolae formation. The Ser-36 phosphorylated form has a role in modulating mitosis in endothelial cells. Positive regulator of cellular mitogenesis of the MAPK signaling pathway. Required for the insulin-stimulated nuclear translocation and activation of MAPK1 and STAT3, and the subsequent regulation of cell cycle progression.

### Product Info

<b>Amount :</b>	50 µl / 100 µl
<b>Content :</b>	1.0 mg/ml, 100 µl
<b>Storage condition :</b>	Store the antibody at 4°C, stable for 6 months. For long-term storage, store at -20°C. Avoid repeated freeze and thaw cycles.

### Application Note

Predicted MW: 18 22kd, Western blotting: 1:500~1:1000

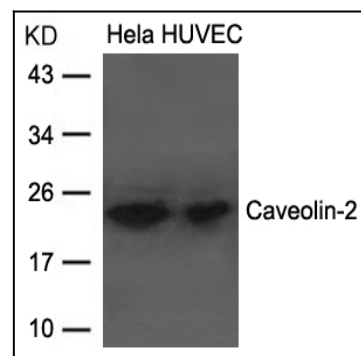


Figure 1: Western blot analysis of extracts from HeLa and HUVEC cells using Caveolin-2 Antibody, 35-1855.