

35-1853: Polyclonal Antibody to Met (Ab-1234/1235)

Clonality :	Polyclonal
Application :	WB
Reactivity :	Human,Mouse,Rat
Format :	Purified
Alternative Name :	HGF receptor,HGF-SF receptor,Met proto-oncogene tyrosine kinase,c-met,kinase Met
Isotype :	Rabbit IgG
Immunogen Information :	Peptide sequence around aa.1232-1237(K-E-Y-Y-S-V) derived from Human Met.

Description

Receptor for hepatocyte growth factor and scatter factor. Has a tyrosine-protein kinase activity. Functions in cell proliferation, scattering, morphogenesis and survival.

Product Info

Amount :	50 μ l / 100 μ l
Content :	1.0 mg/ml,100 μ l
Storage condition :	Store the antibody at 4°C, stable for 6 months. For long-term storage, store at -20°C. Avoid repeated freeze and thaw cycles.

Application Note

Predicted MW: 145, 170kd, Western blotting: 1: 500~1: 1000

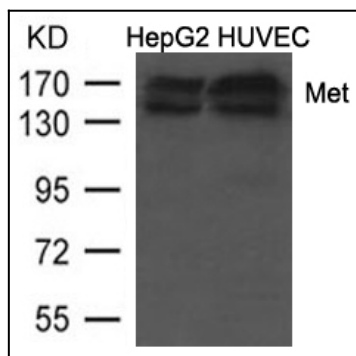


Figure 1: Western blot analysis of extracts from HepG2 and HUVEC cells using Met (Ab-1234/1235) Antibody 35-1853 .