

35-1849: Polyclonal Antibody to IRF-3 (Ab-396)

| | |
|--------------------------------|-------------------------------------------------------------------------|
| Clonality : | Polyclonal |
| Application : | WB |
| Reactivity : | Human |
| Gene : | IRF3 |
| Gene ID : | 3661 |
| Uniprot ID : | Q14653 |
| Format : | Purified |
| Alternative Name : | interferon regulatory factor 3 |
| Isotype : | Rabbit IgG |
| Immunogen Information : | Peptide sequence around aa.394-398(H-I-S-N-S) derived from Human IRF-3. |

Description

Key transcriptional regulator of type I interferon (IFN)-dependent immune responses and plays a critical role in the innate immune response against DNA and RNA viruses. Regulates the transcription of type I IFN genes (IFN-alpha and IFN-beta) and IFN-stimulated genes (ISG) by binding to an interferon-stimulated response element (ISRE) in their promoters. Acts as a more potent activator of the IFN-beta (IFNB) gene than the IFN-alpha (IFNA) gene and plays a critical role in both the early and late phases of the IFNA/B gene induction. Found in an inactive form in the cytoplasm of uninfected cells and following viral infection, double-stranded RNA (dsRNA), or toll-like receptor (TLR) signaling, becomes phosphorylated by IKBKE and TBK1 kinases. This induces a conformational change, leading to its dimerization and nuclear localization and association with CREB binding protein (CREBBP) to form dsRNA-activated factor 1 (DRAF1), a complex which activates the transcription of the type I IFN and ISG genes. Can activate distinct gene expression programs in macrophages and can induce significant apoptosis in primary macrophages.

Product Info

| | |
|----------------------------|-------------------------------------------------------------------------------------------------------------------------------|
| Amount : | 50 µl / 100 µl |
| Content : | 1.0 mg/ml, 100 µl |
| Storage condition : | Store the antibody at 4°C, stable for 6 months. For long-term storage, store at -20°C. Avoid repeated freeze and thaw cycles. |

Application Note

Predicted MW: 45-55kd, Western blotting: 1: 500~1: 1000

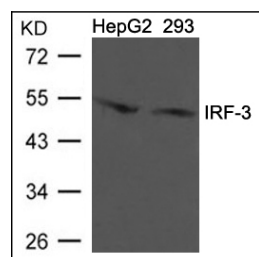


Figure 1: Western blot analysis of extracts from HepG2 and 293 cells using IRF-3 (Ab-396) Antibody 35-1849 .