

## 35-1848: Polyclonal Antibody to Cytochrome C

<b>Clonality :</b>	Polyclonal
<b>Application :</b>	WB
<b>Reactivity :</b>	Human,Mouse,Rat
<b>Gene :</b>	CYCS
<b>Gene ID :</b>	54205
<b>Uniprot ID :</b>	P99999
<b>Format :</b>	Purified
<b>Alternative Name :</b>	CYC,HCS,THC4
<b>Isotype :</b>	Rabbit IgG
<b>Immunogen Information :</b>	Peptide sequence around aa.71-75(N-P-K-K-Y) derived from Human Cytochrome C.

### Description

Electron carrier protein. The oxidized form of the cytochrome c heme group can accept an electron from the heme group of the cytochrome c1 subunit of cytochrome reductase. Cytochrome c then transfers this electron to the cytochrome oxidase complex, the final protein carrier in the mitochondrial electron-transport chain.

### Product Info

<b>Amount :</b>	50 $\mu$ l / 100 $\mu$ l
<b>Content :</b>	1.0 mg/ml,100 $\mu$ l
<b>Storage condition :</b>	Store the antibody at 4°C, stable for 6 months. For long-term storage, store at -20°C. Avoid repeated freeze and thaw cycles.

### Application Note

Predicted MW: 14kd, Western blotting: 1: 500~1: 1000

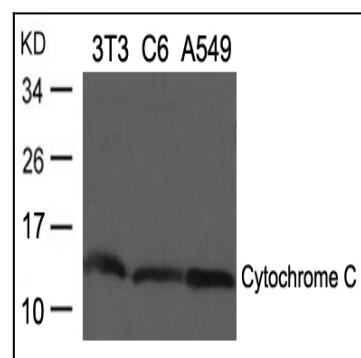


Figure 1: Western blot analysis of extracts from 3T3, C6 and A549 cells using Cytochrome C Antibody 35-1848 .