

## 35-1843: Polyclonal Antibody to C/EBPbeta

<b>Clonality :</b>	Polyclonal
<b>Application :</b>	WB
<b>Reactivity :</b>	Human
<b>Gene :</b>	CEBPB
<b>Gene ID :</b>	1051
<b>Uniprot ID :</b>	P17676
<b>Format :</b>	Purified
<b>Alternative Name :</b>	IL6DBP, CRP2, TCF5, LAP, NF-IL6
<b>Isotype :</b>	Rabbit IgG
<b>Immunogen Information :</b>	Peptide sequence around aa.336~340(E-P-L-L-A) derived from Human C/EBPb.

### Description

Important transcriptional activator in the regulation of genes involved in immune and inflammatory responses. Specifically binds to an IL-1 response element in the IL-6 gene. NF-IL6 also binds to regulatory regions of several acute-phase and cytokines genes. It probably plays a role in the regulation of acute-phase reaction, inflammation and hemopoiesis. The consensus recognition site is 5'-T[TG]NNGNAA[TG]-3'. Functions in brown adipose tissue (BAT) differentiation

### Product Info

<b>Amount :</b>	50 $\mu$ l / 100 $\mu$ l
<b>Content :</b>	Supplied at 1.0mg/mL in phosphate buffered saline (without Mg <sup>2+</sup> and Ca <sup>2+</sup> ), pH 7.4, 150mM NaCl, 0.02% sodium azide and 50% glycerol.
<b>Storage condition :</b>	Store the antibody at 4°C, stable for 6 months. For long-term storage, store at -20°C. Avoid repeated freeze and thaw cycles.

### Application Note

Predicted MW: 36kd, Western blotting: 1:500~1:1000

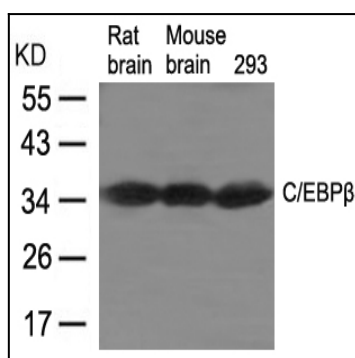


Figure 1: Western blot analysis of extracts from Rat brain, Mouse brain tissue and 293 cells using C/EBPb Antibody 35-1843 .