

35-1841: Polyclonal Antibody to CUEDC2

Clonality :	Polyclonal
Application :	WB
Reactivity :	Human,Mouse
Gene :	CUEDC2
Gene ID :	79004
Uniprot ID :	Q9H467
Format :	Purified
Alternative Name :	C10orf66, bA18I14.5
Isotype :	Rabbit IgG
Immunogen Information :	Peptide sequence around aa.262~266(D-V-R-N-P) derived from Human CUEDC2.

Description

Down-regulates ESR1 protein levels through the ubiquitination-proteasome pathway, regardless of the presence of 17 beta-estradiol. Also involved in 17 beta-estradiol-induced ESR1 degradation. Controls PGR protein levels through a similar mechanism. Zhang P.-J., Zhao J., Li H.-Y. EMBO J. 26:1831-1842(2007)

Product Info

Amount :	50 μ l / 100 μ l
Content :	Supplied at 1.0mg/mL in phosphate buffered saline (without Mg ²⁺ and Ca ²⁺), pH 7.4, 150mM NaCl, 0.02% sodium azide and 50% glycerol.
Storage condition :	Store the antibody at 4°C, stable for 6 months. For long-term storage, store at -20°C. Avoid repeated freeze and thaw cycles.

Application Note

Predicted MW: 32kd, Western blotting: 1:500~1:1000

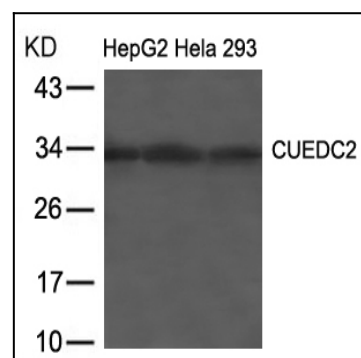


Figure 1: Western blot analysis of extracts from HepG2, Hela and 293 cells using CUEDC2 Antibody 35-1841 .