

35-1836: Polyclonal Antibody to WISP2

| | |
|--------------------------------|---|
| Clonality : | Polyclonal |
| Application : | WB |
| Reactivity : | Human |
| Gene : | WISP2 |
| Gene ID : | 8839 |
| Uniprot ID : | O76076 |
| Format : | Purified |
| Alternative Name : | CCN5, CT58, CTGF-L |
| Isotype : | Rabbit IgG |
| Immunogen Information : | Peptide sequence around aa.242~246(G-R-S-P-Q) derived from Human WISP2. |

Description

May play an important role in modulating bone turnover. Promotes the adhesion of osteoblast cells and inhibits the binding of fibrinogen to integrin receptors. In addition, inhibits osteocalcin production.

Product Info

| | |
|----------------------------|--|
| Amount : | 50 µl / 100 µl |
| Content : | Supplied at 1.0mg/mL in phosphate buffered saline (without Mg ²⁺ and Ca ²⁺), pH 7.4, 150mM NaCl, 0.02% sodium azide and 50% glycerol. |
| Storage condition : | Store the antibody at 4°C, stable for 6 months. For long-term storage, store at -20°C. Avoid repeated freeze and thaw cycles. |

Application Note

Predicted MW: 27kd, Western blotting: 1:500~1:1000

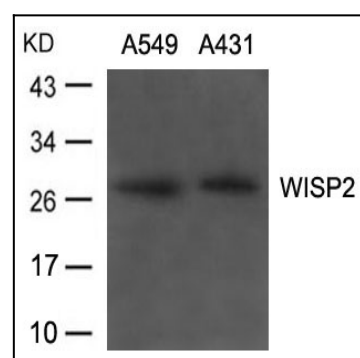


Figure 1: Western blot analysis of extracts from A549, A431 cells using WISP2 Antibody 35-1836 .