

35-1832: Polyclonal Antibody to GFI1b

Clonality :	Polyclonal
Application :	WB
Reactivity :	Human,Mouse,Rat
Gene :	GFI1B
Gene ID :	8328
Uniprot ID :	Q5VTD9
Format :	Purified
Alternative Name :	Gfi-1b
Isotype :	Rabbit IgG
Immunogen Information :	Peptide sequence around aa.322~326(H-R-E-S-Q) derived from Human GFI1b.

Description

Essential proto-oncogenic transcriptional regulator necessary for development and differentiation of erythroid and megakaryocytic lineages. Transcriptional repressor or activator depending on both promoter and cell type context; represses promoter activity of SOCS1 and SOCS3 and thus, may regulate cytokine signaling pathways. Cooperates with GATA1 to repress target gene transcription, such as the apoptosis regulator BCL2L1; GFI1B silencing in leukemic cell lines markedly increase apoptosis rate. Inhibits down-regulation of MYC and MYB as well as the cyclin-dependent kinase inhibitor CDKN1A/P21WAF1 in IL6-treated myelomonocytic cells. Represses expression of GATA3 in T-cell lymphomas and inhibits GATA1-mediated transcription; as GATA1 also mediates erythroid GFI1B transcription, both GATA1 and GFI1B participate in a feedback regulatory pathway controlling the expression of GFI1B gene in erythroid cells. Suppresses GATA1-mediated stimulation of GFI1B promoter through protein interaction. Binds to gamma-satellite DNA and to its own promoter, auto-repressing its own expression. Alters histone methylation by recruiting histone methyltransferase to target genes promoters. Plays a role in heterochromatin formation. Osawa M., Yamaguchi T., Nakamura Y. Iwama A. Blood 100:2769-2777(2002) Huang D.-Y., Kuo Y.-Y., Chang Z.-F. Nucleic Acids Res. 33:5331-5342(2005) Vassen L., Fiolka K., Moeroy T. EMBO J. 25:2409-2419(2006)

Product Info

Amount :	50 µl / 100 µl
Content :	Supplied at 1.0mg/mL in phosphate buffered saline (without Mg ²⁺ and Ca ²⁺), pH 7.4, 150mM NaCl, 0.02% sodium azide and 50% glycerol.
Storage condition :	Store the antibody at 4°C, stable for 6 months. For long-term storage, store at -20°C. Avoid repeated freeze and thaw cycles.

Application Note

Predicted MW: 38kd, Western blotting: 1:500~1:1000

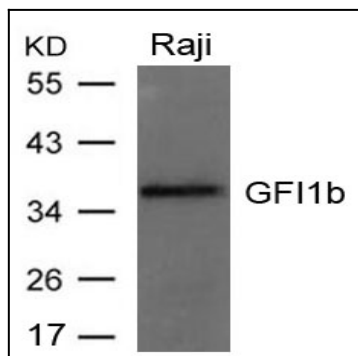


Figure 1: Western blot analysis of extracts from Raji cells using GFI1b Antibody 35-1832 .