

35-1829: Polyclonal Antibody to Rex1(ZFP42)

Clonality :	Polyclonal
Application :	WB
Reactivity :	Human
Gene :	ZFP42
Gene ID :	132625
Uniprot ID :	Q96MM3
Format :	Purified
Alternative Name :	REX1, ZNF754
Isotype :	Rabbit IgG
Immunogen Information :	Peptide sequence around aa.10~14(K-T-R-H-Q) derived from Human Rex1(ZFP42).

Description

Involved in self-renewal property of ES cells. May be involved in transcriptional regulation.

Product Info

Amount :	50 μ l / 100 μ l
Content :	Supplied at 1.0mg/mL in phosphate buffered saline (without Mg ²⁺ and Ca ²⁺), pH 7.4, 150mM NaCl, 0.02% sodium azide and 50% glycerol.
Storage condition :	Store the antibody at 4°C, stable for 6 months. For long-term storage, store at -20°C. Avoid repeated freeze and thaw cycles.

Application Note

Predicted MW: 35kd, Western blotting: 1:500~1:1000

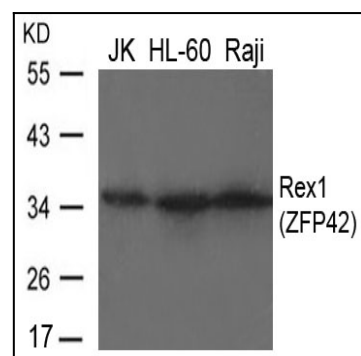


Figure 1: Western blot analysis of extracts from JK, HL-60 and Raji cells using Rex1(ZFP42) Antibody 35-1829 .