

## 35-1826: Polyclonal Antibody to HNF-1beta(TCF-2)

<b>Clonality :</b>	Polyclonal
<b>Application :</b>	WB
<b>Reactivity :</b>	Human,Mouse,Rat
<b>Gene :</b>	HNF1B
<b>Gene ID :</b>	6928
<b>Uniprot ID :</b>	P35680
<b>Format :</b>	Purified
<b>Alternative Name :</b>	FJHN, HNF2, LFB3, TCF2, HPC11
<b>Isotype :</b>	Rabbit IgG
<b>Immunogen Information :</b>	Peptide sequence around aa.252~256(R-Q-K-N-P) derived from Human HNF-1b(TCF-2).

### Description

Transcription factor, probably binds to the inverted palindrome 5'-GTTAATNATTAAC-3'. Lindner T.H., Njoelstad P.R., Horikawa Y., Bostad L. Mol. Genet. 8:2001-2008(1999) Weng J.P., Lehto M., Forsblom C., Huang X. Diabetologia 43:131-132(2000)

### Product Info

<b>Amount :</b>	50 $\mu$ l / 100 $\mu$ l
<b>Content :</b>	Supplied at 1.0mg/mL in phosphate buffered saline (without Mg <sup>2+</sup> and Ca <sup>2+</sup> ), pH 7.4, 150mM NaCl, 0.02% sodium azide and 50% glycerol.
<b>Storage condition :</b>	Store the antibody at 4°C, stable for 6 months. For long-term storage, store at -20°C. Avoid repeated freeze and thaw cycles.

### Application Note

Predicted MW: 45,58,61kd, Western blotting: 1:500~1:1000

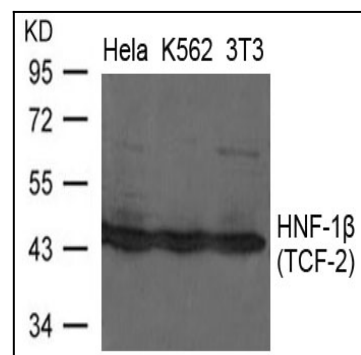


Figure 1: Western blot analysis of extracts from HeLa, K562 and 3T3 cells using HNF-1b(TCF-2) Antibody 35-1826 .