

## 35-1824: Polyclonal Antibody to beta-Enolase(ENO-3)

<b>Clonality :</b>	Polyclonal
<b>Application :</b>	WB
<b>Reactivity :</b>	Human,Mouse
<b>Gene :</b>	ENO3
<b>Gene ID :</b>	2027
<b>Uniprot ID :</b>	P13929
<b>Format :</b>	Purified
<b>Alternative Name :</b>	MSE, GSD13
<b>Isotype :</b>	Rabbit IgG
<b>Immunogen Information :</b>	Peptide sequence around aa.49~53(L-R-D-G-D) derived from Human b-Enolase(ENO-3).

### Description

Appears to have a function in striated muscle development and regeneration.

### Product Info

<b>Amount :</b>	50 $\mu$ l / 100 $\mu$ l
<b>Content :</b>	Supplied at 1.0mg/mL in phosphate buffered saline (without Mg <sup>2+</sup> and Ca <sup>2+</sup> ), pH 7.4, 150mM NaCl, 0.02% sodium azide and 50% glycerol.
<b>Storage condition :</b>	Store the antibody at 4°C, stable for 6 months. For long-term storage, store at -20°C. Avoid repeated freeze and thaw cycles.

### Application Note

Predicted MW: 45kd, Western blotting: 1:500~1:1000

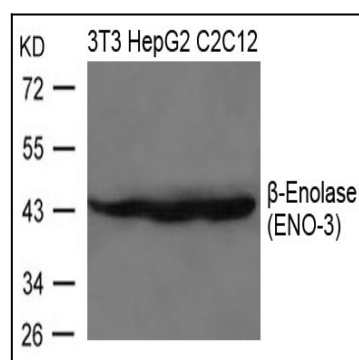


Figure 1: Western blot analysis of extracts from 3T3, HepG2 and C2C12 cells using b-Enolase(ENO-3) Antibody 35-1824 .