

## 35-1819: Polyclonal Antibody to Synaptophysin

<b>Clonality :</b>	Polyclonal
<b>Application :</b>	WB
<b>Reactivity :</b>	Rat,Mouse,Human
<b>Gene :</b>	SYP
<b>Gene ID :</b>	6855
<b>Uniprot ID :</b>	P08247
<b>Format :</b>	Purified
<b>Alternative Name :</b>	MRXSYN
<b>Isotype :</b>	Rabbit IgG
<b>Immunogen Information :</b>	Peptide sequence around aa.305~309(A-P-T-S-F) derived from Human Synaptophysin

### Description

Possibly involved in structural functions as organizing other membrane components or in targeting the vesicles to the plasma membrane. Involved in the regulation of short-term and long-term synaptic plasticity "Characterization of a multidomain adaptor protein, p140Cap, as part of a pre-synaptic complex."

### Product Info

<b>Amount :</b>	50 µl / 100 µl
<b>Content :</b>	Supplied at 1.0mg/mL in phosphate buffered saline (without Mg <sup>2+</sup> and Ca <sup>2+</sup> ), pH 7.4, 150mM NaCl, 0.02% sodium azide and 50% glycerol.
<b>Storage condition :</b>	Store the antibody at 4°C, stable for 6 months. For long-term storage, store at -20°C. Avoid repeated freeze and thaw cycles.

### Application Note

Predicted MW: 38kd, Western blotting: 1:500~1:1000

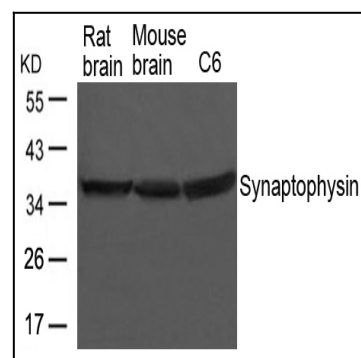


Figure 1: Western blot analysis of extracts from Rat and Mouse brain tissue and C6 cells using Synaptophysin Antibody 35-1819 .