

35-1816: Polyclonal Antibody to Keratin 7

Clonality :	Polyclonal
Application :	WB
Reactivity :	Human
Gene :	KRT7
Gene ID :	3855
Uniprot ID :	P08729
Format :	Purified
Alternative Name :	K7, CK7, SCL, K2C7, MGC3625
Isotype :	Rabbit IgG
Immunogen Information :	Peptide sequence around aa.22~26(A-Q-V-R-L) derived from Human Keratin 7

Description

Blocks interferon-dependent interphase and stimulates DNA synthesis in cells. Involved in the translational regulation of the human papillomavirus type 16 E7 mRNA (HPV16 E7). "Sarcolectin (SCL): structure and expression of the recombinant molecule."

Product Info

Amount :	50 µl / 100 µl
Content :	Supplied at 1.0mg/mL in phosphate buffered saline (without Mg ²⁺ and Ca ²⁺), pH 7.4, 150mM NaCl, 0.02% sodium azide and 50% glycerol.
Storage condition :	Store the antibody at 4°C, stable for 6 months. For long-term storage, store at -20°C. Avoid repeated freeze and thaw cycles.

Application Note

Predicted MW: 52kd, Western blotting: 1:500~1:1000

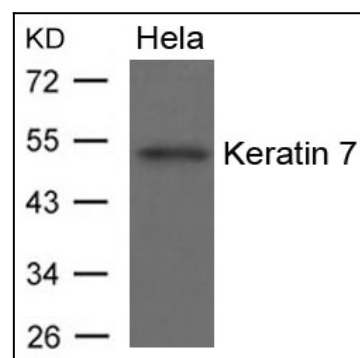


Figure 1: Western blot analysis of extracts from HeLa cells using Keratin 7 Antibody 35-1816 .