

35-1815: Polyclonal Antibody to CRABP2

Clonality :	Polyclonal
Application :	WB
Reactivity :	Rat,Human
Gene :	CRABP2
Gene ID :	1382
Uniprot ID :	P29373
Format :	Purified
Alternative Name :	RBP6, CRABP-II
Isotype :	Rabbit IgG
Immunogen Information :	Peptide sequence around aa.87~91(K-W-E-S-E) derived from Human CRABP2

Description

Transports retinoic acid to the nucleus. Regulates the access of retinoic acid to the nuclear retinoic acid receptors "Direct channeling of retinoic acid between cellular retinoic acid-binding protein II and retinoic acid receptor sensitizes mammary carcinoma cells to retinoic acid-induced growth arrest.

Product Info

Amount :	50 μ l / 100 μ l
Content :	Supplied at 1.0mg/mL in phosphate buffered saline (without Mg ²⁺ and Ca ²⁺), pH 7.4, 150mM NaCl, 0.02% sodium azide and 50% glycerol.
Storage condition :	Store the antibody at 4°C, stable for 6 months. For long-term storage, store at -20°C. Avoid repeated freeze and thaw cycles.

Application Note

Predicted MW: 16kd, Western blotting: 1:500~1:1000

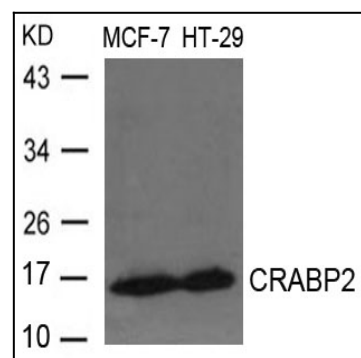


Figure 1: Western blot analysis of extracts from MCF-7 and HT-29 cells using CRABP2 Antibody 35-1815 .