

35-1814: Polyclonal Antibody to E2F-1

Clonality :	Polyclonal
Application :	WB
Reactivity :	Human,Mouse,Rat
Gene :	E2F1
Gene ID :	1869
Uniprot ID :	Q01094
Format :	Purified
Alternative Name :	RBP3, E2F-1, RBAP1, RBBP3
Isotype :	Rabbit IgG
Immunogen Information :	Peptide sequence around aa.430~434(G-D-L-T-P) derived from Human E2F-1

Description

Transcription activator that binds DNA cooperatively with dp proteins through the E2 recognition site, 5'-TTTC[CG]CGC-3' found in the promoter region of a number of genes whose products are involved in cell cycle regulation or in DNA replication. The DRTF1/E2F complex functions in the control of cell-cycle progression from G1 to S phase. E2F-1 binds preferentially RB1 protein, in a cell-cycle dependent manner. It can mediate both cell proliferation and p53-dependent apoptosis. "P53 and E2F-1 cooperate to mediate apoptosis." Wu X., Levine A.J. Proc. Natl. Acad. Sci. U.S.A. 91:3602-3606(1994) "Regulation of E2F1 activity by acetylation." Martinez-Balbas M.A., Bauer U.M., Nielsen S.J., Brehm A., Kouzarides T. EMBO J. 19:662-671(2000) "Regulation of E2F1 function by the nuclear corepressor KAP1." Wang C., Rauscher F.J. III, Cress W.D., Chen J. J. Biol. Chem. 282:29902-29909(2007)

Product Info

Amount :	50 µl / 100 µl
Content :	Supplied at 1.0mg/mL in phosphate buffered saline (without Mg ²⁺ and Ca ²⁺), pH 7.4, 150mM NaCl, 0.02% sodium azide and 50% glycerol.
Storage condition :	Store the antibody at 4°C, stable for 6 months. For long-term storage, store at -20°C. Avoid repeated freeze and thaw cycles.

Application Note

Predicted MW: 70kd, Western blotting: 1:500~1:1000

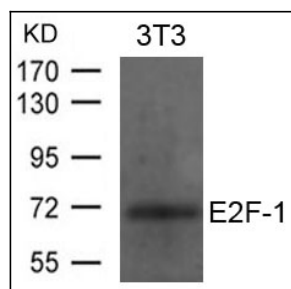


Figure 1: Western blot analysis of extracts from 3T3 cells using E2F-1 Antibody 35-1814 .