

## 35-1812: Polyclonal Antibody to Cdx2

<b>Clonality :</b>	Polyclonal
<b>Application :</b>	WB
<b>Reactivity :</b>	Human,Mouse,Rat,Mk
<b>Gene :</b>	CDX2
<b>Gene ID :</b>	1045
<b>Uniprot ID :</b>	Q99626
<b>Format :</b>	Purified
<b>Alternative Name :</b>	CDX3,CDX-3
<b>Isotype :</b>	Rabbit IgG
<b>Immunogen Information :</b>	Peptide sequence around aa.12~16(S-M-Y-P-S) derived from Human Cdx2

### Description

Involved in the transcriptional regulation of multiple genes expressed in the intestinal epithelium. Important in broad range of functions from early differentiation to maintenance of the intestinal epithelial lining of both the small and large intestine. Inamori K., Takeshita K., Chiba S., Yazaki Y., Hirai H. *Biochem. Biophys. Res. Commun.* 196:203-208(1993)

### Product Info

<b>Amount :</b>	50 µl / 100 µl
<b>Content :</b>	Supplied at 1.0mg/mL in phosphate buffered saline (without Mg <sup>2+</sup> and Ca <sup>2+</sup> ), pH 7.4, 150mM NaCl, 0.02% sodium azide and 50% glycerol.
<b>Storage condition :</b>	Store the antibody at 4°C, stable for 6 months. For long-term storage, store at -20°C. Avoid repeated freeze and thaw cycles.

### Application Note

Predicted MW: 40kd, Western blotting: 1:500~1:1000

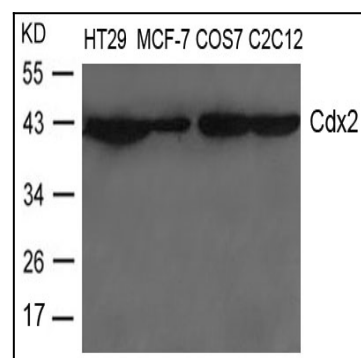


Figure 1: Western blot analysis of extracts from HT-29, MCF-7, COS-7 and C2C12 cells using Cdx2 Antibody 35-1812 .