

## 35-1811: Polyclonal Antibody to Blimp-1

<b>Clonality :</b>	Polyclonal
<b>Application :</b>	WB
<b>Reactivity :</b>	Human
<b>Gene :</b>	PRDM1
<b>Gene ID :</b>	639
<b>Uniprot ID :</b>	O75626
<b>Format :</b>	Purified
<b>Alternative Name :</b>	PRDM1, PRDI-BF1, MGC118922, MGC118923, MGC118924
<b>Isotype :</b>	Rabbit IgG
<b>Immunogen Information :</b>	Peptide sequence around aa.124~128(D-T-V-P-K) derived from Human Blimp-1

### Description

Transcriptional repressor that binds specifically to the PRDI element in the promoter of the beta-interferon gene. Drives the maturation of B-lymphocytes into Ig secreting cells. "NANOS3 function in human germ cell development."

### Product Info

<b>Amount :</b>	50 $\mu$ l / 100 $\mu$ l
<b>Content :</b>	Supplied at 1.0mg/mL in phosphate buffered saline (without Mg <sup>2+</sup> and Ca <sup>2+</sup> ), pH 7.4, 150mM NaCl, 0.02% sodium azide and 50% glycerol.
<b>Storage condition :</b>	Store the antibody at 4°C, stable for 6 months. For long-term storage, store at -20°C. Avoid repeated freeze and thaw cycles.

### Application Note

Predicted MW: 95 100kd, Western blotting: 1:500~1:1000

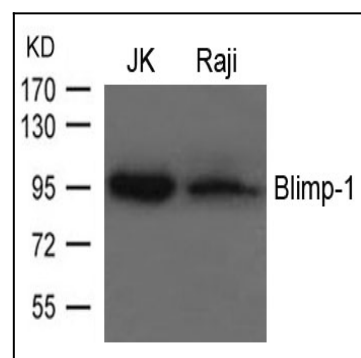


Figure 1: Western blot analysis of extracts from JK and Raji cells using Blimp-1 Antibody 35-1811 .