

35-1804: Polyclonal Antibody to MAP2

Clonality :	Polyclonal
Application :	WB,IF
Reactivity :	Rat,Mouse,Human
Gene :	MAP2
Gene ID :	4133
Uniprot ID :	P11137
Format :	Purified
Alternative Name :	MAP2A, MAP2B, MAP2C
Isotype :	Rabbit IgG
Immunogen Information :	Peptide sequence around aa.1819~1823 (T-A-A-L-A) derived from Human MAP2.

Description

The exact function of MAP2 is unknown but MAPs may stabilize the microtubules against depolymerization. They also seem to have a stiffening effect on microtubules. DeGiorgis J.A., Jaffe H., Moreira J.E., Carlotti C.G. Jr. Proteome Res. 4:306-315(2005) Olsen J.V., Blagoev B., Gnad F., Macek B. Mann M.Cell 127:635-648(2006) Matsuoka S., Ballif B.A., Smogorzewska A., McDonald E.R. Science 316:1160-1166(2007)

Product Info

Amount :	50 µl / 100 µl
Content :	Supplied at 1.0mg/mL in phosphate buffered saline (without Mg ²⁺ and Ca ²⁺), pH 7.4, 150mM NaCl, 0.02% sodium azide and 50% glycerol.
Storage condition :	Store the antibody at 4°C, stable for 6 months. For long-term storage, store at -20°C. Avoid repeated freeze and thaw cycles.

Application Note

Predicted MW: 55-75(2c/2d), 280(2a/2b)kd, Western blotting: 1:500~1:1000, Immunofluorescence: 1:100~1:200

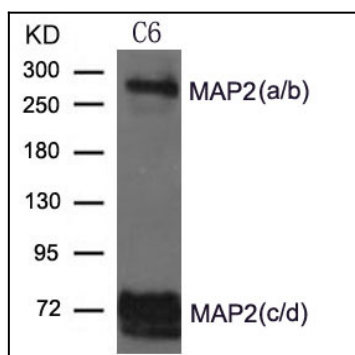


Figure 1: Western blot analysis of extract from C6 cells using MAP2 Antibody 35-1804

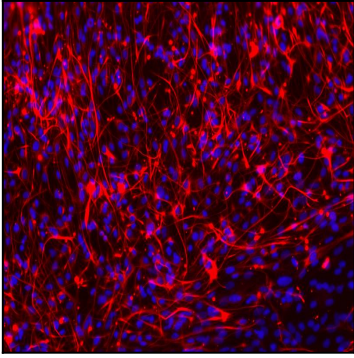


Figure 2: Immunofluorescence staining of paraffin-embedded Glioma cells of Spinal Cord using MAP2 Antibody 35-1804 .