

35-1795: Polyclonal Antibody to LIN28B

Clonality :	Polyclonal
Application :	WB
Reactivity :	Human
Gene :	LIN28B
Gene ID :	389421
Uniprot ID :	Q6Z17
Format :	Purified
Alternative Name :	CSDD2, FLJ16517
Isotype :	Rabbit IgG
Immunogen Information :	Peptide sequence around aa.242~246(P-S-V-Q-K) derived from Human LIN28B

Description

Acts as a suppressor of microRNA (miRNA) biogenesis by specifically binding the precursor let-7 (pre-let-7), a miRNA precursor. Acts by binding pre-let-7 and recruiting ZCCHC11/TUT4 uridylyltransferase, leading to the terminal uridylation of pre-let-7. Uridylated pre-let-7 miRNAs fail to be processed by Dicer and undergo degradation. Specifically recognizes the 5'-GGAG-3' motif in the terminal loop of pre-let-7. Also recognizes and binds non pre-let-7 pre-miRNAs that contain the 5'-GGAG-3' motif in the terminal loop, leading to their terminal uridylation and subsequent degradation. Mediates MYC-mediated let-7 repression. Isoform 1, when overexpressed, stimulates growth of the breast adenocarcinoma cell line MCF-7. Isoform 2 has no effect on cell growth. "Identification and characterization of lin-28 homolog B (LIN28B) in human hepatocellular carcinoma."

Product Info

Amount :	50 μ l / 100 μ l
Content :	Supplied at 1.0mg/mL in phosphate buffered saline (without Mg ²⁺ and Ca ²⁺), pH 7.4, 150mM NaCl, 0.02% sodium azide and 50% glycerol.
Storage condition :	Store the antibody at 4°C, stable for 6 months. For long-term storage, store at -20°C. Avoid repeated freeze and thaw cycles.

Application Note

Predicted MW: 21 32kd, Western blotting: 1:500~1:1000

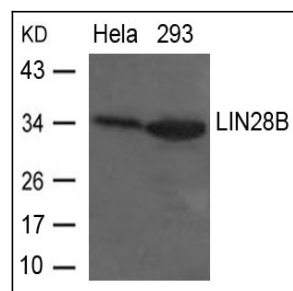


Figure 1: Western blot analysis of extracts from HeLa and 293 cells using LIN28B Antibody 35-1795 .