

35-1791: Polyclonal Antibody to CD3E

Clonality :	Polyclonal
Application :	WB
Reactivity :	Human,Mouse,Rat
Gene :	CD3E
Gene ID :	916
Uniprot ID :	P07766
Format :	Purified
Alternative Name :	T3E, TCRE, FLJ18683
Isotype :	Rabbit IgG
Immunogen Information :	Peptide sequence around aa.197~201(D-L-Y-S-G) derived from Human CD3E.

Description

The CD3 complex mediates signal transduction.

Product Info

Amount :	50 μ l / 100 μ l
Content :	Supplied at 1.0mg/mL in phosphate buffered saline (without Mg ²⁺ and Ca ²⁺), pH 7.4, 150mM NaCl, 0.02% sodium azide and 50% glycerol.
Storage condition :	Store the antibody at 4°C, stable for 6 months. For long-term storage, store at -20°C. Avoid repeated freeze and thaw cycles.

Application Note

Predicted MW: 21kd, Western blotting: 1:500~1:1000

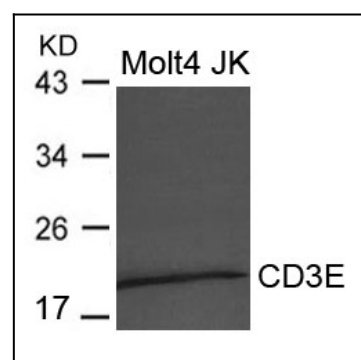


Figure 1: Western blot analysis of extract from Molt4 and JK cells using CD3E Antibody 35-1791