

35-1790: Polyclonal Antibody to Id2

Clonality :	Polyclonal
Application :	WB
Reactivity :	Human,Mouse,Rat
Gene :	ID2
Gene ID :	3398
Uniprot ID :	Q02363
Format :	Purified
Alternative Name :	GIG8, ID2A, ID2H
Isotype :	Rabbit IgG
Immunogen Information :	Peptide sequence around aa.5~9(S-P-V-R-S) derived from Human Id2.

Description

ID (inhibitor of DNA binding) HLH proteins lack a basic DNA-binding domain but are able to form heterodimers with other HLH proteins, thereby inhibiting DNA binding. ID-2 may be an inhibitor of tissue-specific gene expression.

Product Info

Amount :	50 μ l / 100 μ l
Content :	Supplied at 1.0mg/mL in phosphate buffered saline (without Mg ²⁺ and Ca ²⁺), pH 7.4, 150mM NaCl, 0.02% sodium azide and 50% glycerol.
Storage condition :	Store the antibody at 4°C, stable for 6 months. For long-term storage, store at -20°C. Avoid repeated freeze and thaw cycles.

Application Note

Predicted MW: 15kd, Western blotting: 1:500~1:1000

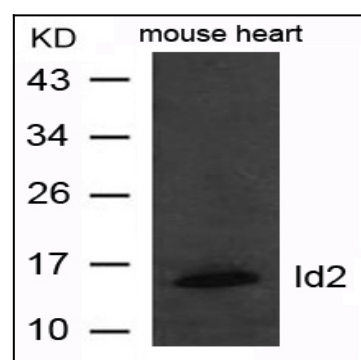


Figure 1: Western blot analysis of extract from mouse heart tissue using Id2 Antibody 35-1790