

35-1789: Polyclonal Antibody to Glut4

Clonality :	Polyclonal
Application :	WB
Reactivity :	Human,Mouse,Rat
Gene :	SLC2A4
Gene ID :	6517
Uniprot ID :	P14672
Format :	Purified
Alternative Name :	SLC2A4
Isotype :	Rabbit IgG
Immunogen Information :	Peptide sequence around aa.501~ 505(E-Y-L-G-P) derived from Human Glut4.

Description

Insulin-regulated facilitative glucose transporter.

Product Info

Amount :	50 μ l / 100 μ l
Content :	Supplied at 1.0mg/mL in phosphate buffered saline (without Mg ²⁺ and Ca ²⁺), pH 7.4, 150mM NaCl, 0.02% sodium azide and 50% glycerol.
Storage condition :	Store the antibody at 4°C, stable for 6 months. For long-term storage, store at -20°C. Avoid repeated freeze and thaw cycles.

Application Note

Predicted MW: 45kd, Western blotting: 1:500~1:1000

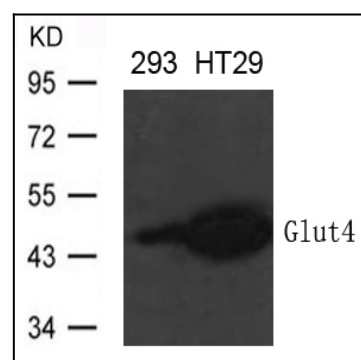


Figure 1: Western blot analysis of extract from 293 and HT-29 cells using Glut4 Antibody 35-1789