

## 35-1788: Polyclonal Antibody to Neuroserpin

<b>Clonality :</b>	Polyclonal
<b>Application :</b>	WB
<b>Reactivity :</b>	Rat,Mouse,Human
<b>Gene :</b>	SERPINI1
<b>Gene ID :</b>	5274
<b>Uniprot ID :</b>	Q99574
<b>Format :</b>	Purified
<b>Alternative Name :</b>	PI12, SERPINI1
<b>Isotype :</b>	Rabbit IgG
<b>Immunogen Information :</b>	Peptide sequence around aa.402~406(T-S-G-H-D) derived from Human Neuroserpin.

### Description

Serine protease inhibitor that inhibits plasminogen activators and plasmin but not thrombin. May be involved in the formation or reorganization of synaptic connections as well as for synaptic plasticity in the adult nervous system. May protect neurons from cell damage by tissue-type plasminogen activator.

### Product Info

<b>Amount :</b>	50 $\mu$ l / 100 $\mu$ l
<b>Content :</b>	Supplied at 1.0mg/mL in phosphate buffered saline (without Mg <sup>2+</sup> and Ca <sup>2+</sup> ), pH 7.4, 150mM NaCl, 0.02% sodium azide and 50% glycerol.
<b>Storage condition :</b>	Store the antibody at 4°C, stable for 6 months. For long-term storage, store at -20°C. Avoid repeated freeze and thaw cycles.

### Application Note

Predicted MW: 55kd, Western blotting: 1:500~1:1000

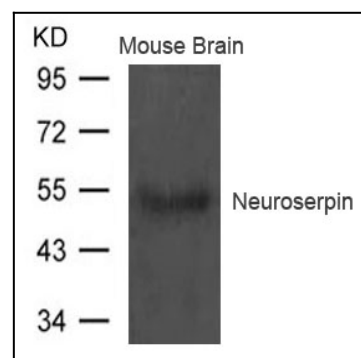


Figure 1: Western blot analysis of extract from Mouse brain tissue using Neuroserpin Antibody 35-1788