

## 35-1787: Polyclonal Antibody to Tubulin beta-III

<b>Clonality :</b>	Polyclonal
<b>Application :</b>	WB
<b>Reactivity :</b>	Mouse,Human
<b>Gene :</b>	TUBB3
<b>Gene ID :</b>	10381
<b>Uniprot ID :</b>	Q13509
<b>Format :</b>	Purified
<b>Alternative Name :</b>	TUBB4, CFEOM3A, TUBB3
<b>Isotype :</b>	Rabbit IgG
<b>Immunogen Information :</b>	Peptide sequence around aa.442~446(E-E-S-E-A) derived from Human Tubulin b-III.

### Description

Tubulin is the major constituent of microtubules. It binds two moles of GTP, one at an exchangeable site on the beta chain and one at a non-exchangeable site on the a-chain. TUBB3 plays a critical role in proper axon guidance and maintenance.

### Product Info

<b>Amount :</b>	50 $\mu$ l / 100 $\mu$ l
<b>Content :</b>	Supplied at 1.0mg/mL in phosphate buffered saline (without Mg <sup>2+</sup> and Ca <sup>2+</sup> ), pH 7.4, 150mM NaCl, 0.02% sodium azide and 50% glycerol.
<b>Storage condition :</b>	Store the antibody at 4°C, stable for 6 months. For long-term storage, store at -20°C. Avoid repeated freeze and thaw cycles.

### Application Note

Predicted MW: 55kd, Western blotting: 1:500~1:1000

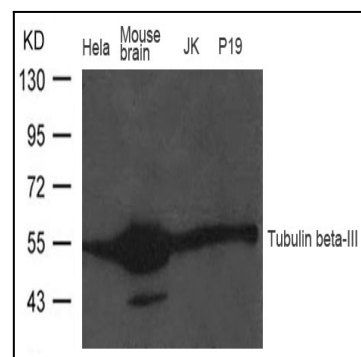


Figure 1: Western blot analysis of extract from Mouse brain tissue, HeLa, JK and P19 cells using Tubulin beta-III Antibody 35-1787