

## 35-1783: Polyclonal Antibody to Glycogen Synthase

|                                |  |
|--------------------------------|--|
| <b>Clonality :</b>             | Polyclonal   |
| <b>Application :</b>           | WB   |
| <b>Reactivity :</b>            | Human,Mouse,Rat  |
| <b>Gene :</b>                  | GYS1   |
| <b>Gene ID :</b>               | 2997   |
| <b>Uniprot ID :</b>            | P13807   |
| <b>Format :</b>                | Purified   |
| <b>Alternative Name :</b>      | GYS  |
| <b>Isotype :</b>               | Rabbit IgG   |
| <b>Immunogen Information :</b> | Peptide sequence around aa. 644~648 (P-S-P-S-L) derived from Human Glycogen Synthase . |

### Description

Transfers the glycosyl residue from UDP-Glc to the non-reducing end of  $\alpha$ -1,4-glucan.

### Product Info

|                            |  |
|----------------------------|--|
| <b>Amount :</b>            | 50 $\mu$ l / 100 $\mu$ l   |
| <b>Content :</b>           | Supplied at 1.0mg/mL in phosphate buffered saline (without Mg <sup>2+</sup> and Ca <sup>2+</sup> ), pH 7.4, 150mM NaCl, 0.02% sodium azide and 50% glycerol. |
| <b>Storage condition :</b> | Store the antibody at 4°C, stable for 6 months. For long-term storage, store at -20°C. Avoid repeated freeze and thaw cycles.                                |

### Application Note

Predicted MW: 84kd, Western blotting: 1:500

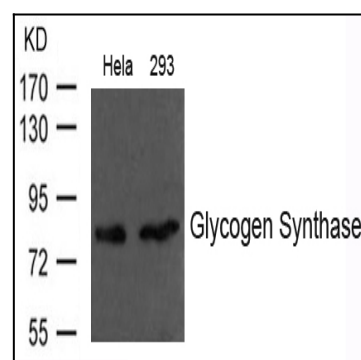


Figure 1: Western blot analysis of extract from HeLa and 293 cells using Glycogen Synthase Antibody 35-1783