

## 35-1773: Polyclonal Antibody to ESA (FLOT2)

<b>Clonality :</b>	Polyclonal
<b>Application :</b>	WB
<b>Reactivity :</b>	Human
<b>Gene :</b>	FLOT2
<b>Gene ID :</b>	2319
<b>Uniprot ID :</b>	Q14254
<b>Format :</b>	Purified
<b>Alternative Name :</b>	ECS1, ESA1, ECS-1, M17S1
<b>Isotype :</b>	Rabbit IgG
<b>Immunogen Information :</b>	Peptide sequence around aa.420~424(I-K-K-A-T) derived from Human ESA (FLOT2).

### Description

May act as a scaffolding protein within caveolar membranes, functionally participating in formation of caveolae or caveolae-like vesicles. May be involved in epidermal cell adhesion and epidermal structure and function.

### Product Info

<b>Amount :</b>	50 $\mu$ l / 100 $\mu$ l
<b>Content :</b>	Supplied at 1.0mg/mL in phosphate buffered saline (without Mg <sup>2+</sup> and Ca <sup>2+</sup> ), pH 7.4, 150mM NaCl, 0.02% sodium azide and 50% glycerol.
<b>Storage condition :</b>	Store the antibody at 4°C, stable for 6 months. For long-term storage, store at -20°C. Avoid repeated freeze and thaw cycles.

### Application Note

Predicted MW: 47kd, Western blotting: 1:500~1:1000

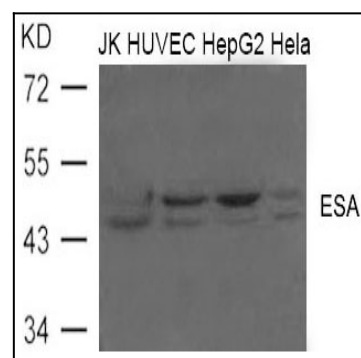


Figure 1: Western blot analysis of extract from JK, HUVEC, HepG2 and Hela cells using ESA(FLOT2) Antibody 35-1773