

35-1772: Polyclonal Antibody to ERAB

Clonality :	Polyclonal
Application :	WB
Reactivity :	Human
Gene :	HSD17B10
Gene ID :	3028
Uniprot ID :	Q99714
Format :	Purified
Alternative Name :	ABAD, CAMR, HCD2, MHBD, HADH2
Isotype :	Rabbit IgG
Immunogen Information :	Peptide sequence around aa.253~257(L-D-G-A-I)derived from Human ERAB.

Description

Functions in mitochondrial tRNA maturation. Part of mitochondrial ribonuclease P, an enzyme composed of MRPP1/RG9MTD1, MRPP2/HSD17B10 and MRPP3/KIAA0391, which cleaves tRNA molecules in their 5'-ends. By interacting with intracellular amyloid-beta, it may contribute to the neuronal dysfunction associated with Alzheimer disease (AD).

Product Info

Amount :	50 μ l / 100 μ l
Content :	Supplied at 1.0mg/mL in phosphate buffered saline (without Mg ²⁺ and Ca ²⁺), pH 7.4, 150mM NaCl, 0.02% sodium azide and 50% glycerol.
Storage condition :	Store the antibody at 4°C, stable for 6 months. For long-term storage, store at -20°C. Avoid repeated freeze and thaw cycles.

Application Note

Predicted MW: 27kd, Western blotting: 1:500~1:1000

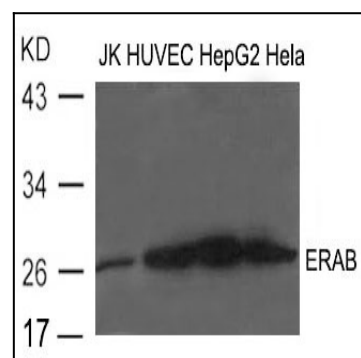


Figure 1: Western blot analysis of extract from JK, HUVEC, HepG2 and Hela cells using ERAB Antibody 35-1772