

35-1766: Polyclonal Antibody to Beclin-1

Clonality :	Polyclonal
Application :	WB
Reactivity :	Human
Gene :	BECN1
Gene ID :	8678
Uniprot ID :	Q14457
Format :	Purified
Alternative Name :	ATG6, VPS30
Isotype :	Rabbit IgG
Immunogen Information :	Peptide sequence around aa.69-73(F-I-E-T-P) derived from Human Beclin-1.

Description

Plays a central role in autophagy. Required for the abscission step in cytokinesis. May play a role in antiviral host defense. Protects against infection by a neurovirulent strain of Sindbis virus.

Product Info

Amount :	50 μ l / 100 μ l
Content :	Supplied at 1.0mg/mL in phosphate buffered saline (without Mg ²⁺ and Ca ²⁺), pH 7.4, 150mM NaCl, 0.02% sodium azide and 50% glycerol.
Storage condition :	Store the antibody at 4°C, stable for 6 months. For long-term storage, store at -20°C. Avoid repeated freeze and thaw cycles.

Application Note

Predicted MW: 60kd, Western blotting: 1:500~1:1000

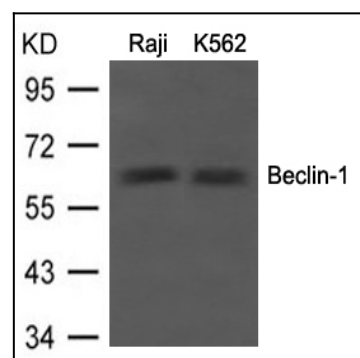


Figure 1: Western blot analysis of extracts from Raji and K562 cells using Beclin-1 Antibody 35-1766 .