

## 35-1765: Polyclonal Antibody to alpha-Tubulin

<b>Clonality :</b>	Polyclonal
<b>Application :</b>	WB
<b>Reactivity :</b>	Rat,Mouse,Human
<b>Gene :</b>	TUBA4A
<b>Gene ID :</b>	7277
<b>Uniprot ID :</b>	P68366
<b>Format :</b>	Purified
<b>Alternative Name :</b>	Alpha-tubulin 1, Testis-specific alpha-tubulin, Tubulin H2-alpha, Tubulin alpha-1 chain
<b>Isotype :</b>	Rabbit IgG
<b>Immunogen Information :</b>	Peptide sequence around aa.437-441(V-D-S-V-E) derived from Human alpha-Tubulin.

### Description

Tubulin is the major constituent of microtubules. It binds two moles of GTP, one at an exchangeable site on the beta chain and one at a non-exchangeable site on the a-chain.

### Product Info

<b>Amount :</b>	50 $\mu$ l / 100 $\mu$ l
<b>Content :</b>	Supplied at 1.0mg/mL in phosphate buffered saline (without Mg <sup>2+</sup> and Ca <sup>2+</sup> ), pH 7.4, 150mM NaCl, 0.02% sodium azide and 50% glycerol.
<b>Storage condition :</b>	Store the antibody at 4°C, stable for 6 months. For long-term storage, store at -20°C. Avoid repeated freeze and thaw cycles.

### Application Note

Predicted MW: 52kd, Western blotting: 1:500~1:1000

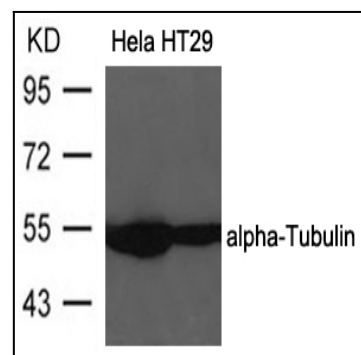


Figure 1: Western blot analysis of extracts from HeLa and HT29 cells using alpha-Tubulin Antibody 35-1765 .