

10-7546: Monoclonal Antibody to E-cadherin (Clone: ABM43F8)

Clonality :	Monoclonal
Clone Name :	ABM43F8
Application :	IHC,WB
Reactivity :	Human
Gene :	CDH1
Gene ID :	999
Uniprot ID :	P12830
Format :	Purified
Alternative Name :	CDH1,CDHE,UVO
Isotype :	Mouse IgG1 Kappa
Immunogen Information :	A partial length recombinant E-cadherin protein (amino acids 438-556) was used as the immunogen for this antibody .

Description

Epithelial cadherin (E-cadherin) is a calcium dependent cell-cell adhesion glycoprotein. It is associated with gland formation, stratification, and epithelial polarization. Its deregulation affects cell-cell adhesion and results in increased invasiveness of distinct human carcinomas like gastric cancer, malignancy, oral squamous cell carcinoma, Atypical parathyroid adenoma (APA). Loss of function of E-cadherin leads to the disappearance of epithelial characteristics of the cells and generates higher invasiveness for extracellular matrices. E-cadherin expression is considered to be a decisive indicator for differentiation, aggressive behaviour, high proliferation, metastasis, poor prognosis and invasiveness of human carcinoma cells.

Product Info

Amount :	25 µg / 100 µg
Purification :	Protein G Chromatography
Content :	25 µg in 50 µl/100 µg in 200 µl PBS containing 0.05% BSA and 0.05% sodium azide. Sodium azide is highly toxic.
Storage condition :	Store the antibody at 4°C, stable for 6 months. For long-term storage, store at -20°C. Avoid repeated freeze and thaw cycles.

Application Note

Western blot analysis: 4-6 µg/ml, Immunohistochemical analysis: 5-15 µg/ml

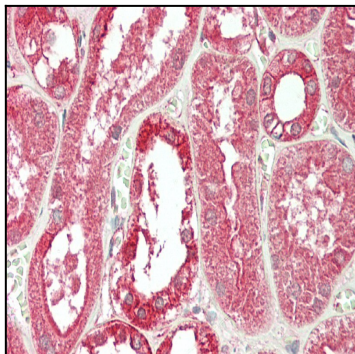


Fig-1: Immunohistochemical analysis of E-cadherin in human Kidney tissue using E-cadherin antibody (Clone: ABM43F8) at 15 $\mu\text{g/ml}$.

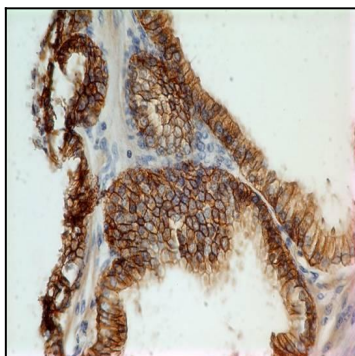


Fig-2 : Immunohistochemical analysis of E-cadherin in human colon adenocarcinoma tissue using E-cadherin antibody (Clone: ABM43F8) at 5 $\mu\text{g/ml}$.

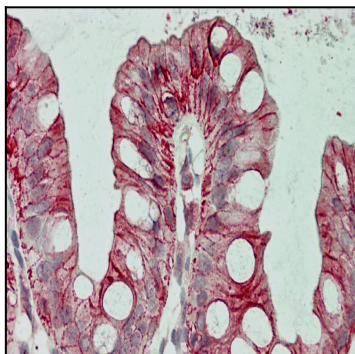


Fig-3 : Immunohistochemical analysis of E-cadherin in human colon tissue using E-cadherin antibody (Clone: ABM43F8) at 15 $\mu\text{g/ml}$.

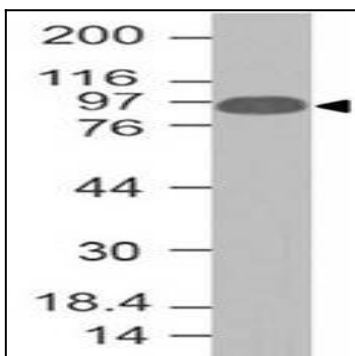


Fig-4 : Western blot analysis of E-cadherin. Anti- E-cadherin antibody (Clone: ABM43F8) was tested at 4 $\mu\text{g/ml}$ on human Intestine lysate.