

35-1759: Polyclonal Antibody to CK2 Alpha

Clonality :	Polyclonal
Application :	WB
Reactivity :	Human,Mouse,Rat
Gene :	CSNK2A1
Gene ID :	1457
Uniprot ID :	P68400
Format :	Purified
Alternative Name :	CKII, CK2A1, CSNK2A1
Isotype :	Rabbit IgG
Immunogen Information :	Peptide sequence around aa. 353~357 (S-G-I-S-S) derived from Human CK2?.

Description

Casein kinases are operationally defined by their preferential utilization of acidic proteins such as caseins as substrates. The a and a' chains contain the catalytic site. Participates in Wnt signaling. CK2 phosphorylates 'Ser-392' of p53/TP53 following UV irradiation. Keller D.M., Zeng X., et al., Mol. Cell 7:283-292(2001) Keller D.M., Lu H. et al., J. Biol. Chem. 277:50206-50213(2002) Trembley J.H., Tatsumi S., et al., Mol. Cell. Biol. 25:1446-1457(2005) Niefind K., Guerra B., et al., Acta Crystallogr. D 56:1680-1684(2000)

Product Info

Amount :	50 µl / 100 µl
Content :	Supplied at 1.0mg/mL in phosphate buffered saline (without Mg ²⁺ and Ca ²⁺), pH 7.4, 150mM NaCl, 0.02% sodium azide and 50% glycerol.
Storage condition :	Store the antibody at 4°C, stable for 6 months. For long-term storage, store at -20°C. Avoid repeated freeze and thaw cycles.

Application Note

Predicted MW: 42kd, Western blotting: 1:1000

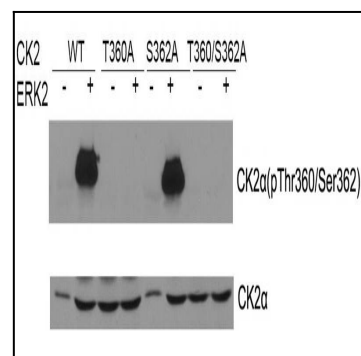


Figure 1: Western blot of CK2α(Phospho-Thr360/Ser362) antibody(35-1339) and CK2αantibody(35-1759) in vitro kinase assay. Both purified ERK2 and CK2 were used.