

35-1752: Polyclonal Antibody to MDM2 (Ab-166)

Clonality :	Polyclonal
Application :	WB,IHC,IF
Reactivity :	Human
Gene :	MDM2
Gene ID :	4193
Uniprot ID :	Q00987
Format :	Purified
Alternative Name :	HDMX,hdm2
Isotype :	Rabbit IgG
Immunogen Information :	Peptide sequence around aa.164~168 (A-I-S-E-T) derived from Human MDM2.

Description

This gene is a target gene of the transcription factor tumor protein p53. The encoded protein is a nuclear phosphoprotein that binds and inhibits transactivation by tumor protein p53, as part of an autoregulatory negative feedback loop. Overexpression of this gene can result in excessive inactivation of tumor protein p53, diminishing its tumor suppressor function. This protein has E3 ubiquitin ligase activity, which targets tumor protein p53 for proteasomal degradation. This protein also affects the cell cycle, apoptosis, and tumorigenesis through interactions with other proteins, including retinoblastoma 1 and ribosomal protein L5. More than 40 different alternatively spliced transcript variants have been isolated from both tumor and normal tissues Haupt, Y. et al. (1997) Nature 387, 296-299. Zhou, B. P. et al. (2001) Nat. Cell Biol. 3, 973-981. Grossman, S. R. et al. (1998) Mol. Cell 2, 405-415. Mayo, L.D. and Donner, D.B. (2001) Proc. Natl. Acad. Sci. USA 98, 11598-11603.

Product Info

Amount :	50 μ l / 100 μ l
Content :	Supplied at 1.0mg/mL in phosphate buffered saline (without Mg ²⁺ and Ca ²⁺), pH 7.4, 150mM NaCl, 0.02% sodium azide and 50% glycerol.
Storage condition :	Store the antibody at 4°C, stable for 6 months. For long-term storage, store at -20°C. Avoid repeated freeze and thaw cycles.

Application Note

Predicted MW: 90kd, Western blotting: 1:500~1:1000, Immunohistochemistry: 1:50~1:100, Immunofluorescence: 1:100~1:200

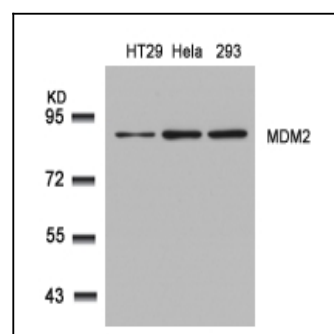


Figure 1: Western blot analysis of extracts from HT29, HeLa and 293 cells using MDM2(Ab-166) Antibody 35-1752 .

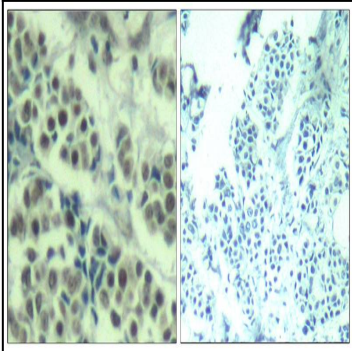


Figure 2: Immunohistochemical analysis of paraffin-embedded human breast carcinoma tissue using MDM2(Ab-166) Antibody 35-1752 (left) or the same antibody preincubated with blocking peptide(right).

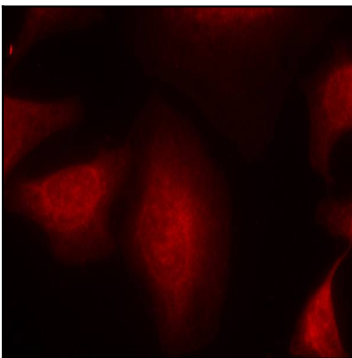


Figure 3: Immunofluorescence staining of methanol-fixed HeLa cells using MDM2(Ab-166) Antibody 35-1752 .