

35-1750: Polyclonal Antibody to Met (Ab-1003)

| | |
|--------------------------------|---|
| Clonality : | Polyclonal |
| Application : | WB,IHC |
| Reactivity : | Human,Mouse,Rat |
| Gene : | MET |
| Gene ID : | 4233 |
| Uniprot ID : | P08581 |
| Format : | Purified |
| Alternative Name : | Scatter factor receptor |
| Isotype : | Rabbit IgG |
| Immunogen Information : | Peptide sequence around aa. 1001~1005 (V-D-Y-R-A) derived from Human Met. |

Description

Receptor for hepatocyte growth factor and scatter factor. Has a tyrosine-protein kinase activity. Functions in cell proliferation, scattering, morphogenesis and survival.

Product Info

| | |
|----------------------------|--|
| Amount : | 50 μ l / 100 μ l |
| Content : | Supplied at 1.0mg/mL in phosphate buffered saline (without Mg ²⁺ and Ca ²⁺), pH 7.4, 150mM NaCl, 0.02% sodium azide and 50% glycerol. |
| Storage condition : | Store the antibody at 4°C, stable for 6 months. For long-term storage, store at -20°C. Avoid repeated freeze and thaw cycles. |

Application Note

Predicted MW: 156kd, Western blotting: 1:500~1:1000, Immunohistochemistry: 1:50~1:100

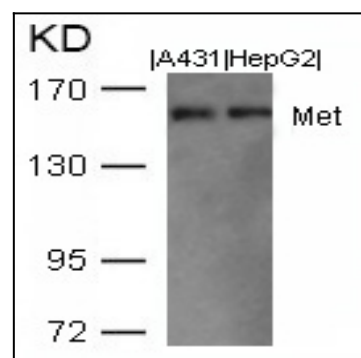


Figure 1: Western blot analysis of extracts from A431 and HepG2 cells using Met(Ab-1003) Antibody 35-1750 .

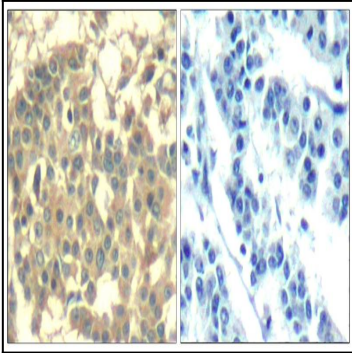


Figure 2: Immunohistochemical analysis of paraffin-embedded human breast carcinoma tissue using Met(Ab-1003) Antibody 35-1750 (left) or the same antibody preincubated with blocking peptide(right).