

35-1748: Polyclonal Antibody to syk (Ab-323)

Clonality :	Polyclonal
Application :	WB,IHC,IF
Reactivity :	Human
Gene :	SYK
Gene ID :	6850
Uniprot ID :	P43405
Format :	Purified
Alternative Name :	Spleen tyrosine kinase
Isotype :	Rabbit IgG
Immunogen Information :	Peptide sequence around aa. 321~325 (N-P-Y-E-P) derived from Human syk.

Description

Positive effector of BCR-stimulated responses. Couples the B-cell antigen receptor (BCR) to the mobilization of calcium ion either through a phosphoinositide 3-kinase-dependent pathway, when not phosphorylated on tyrosines of the linker region, or through a phospholipase C-gamma-dependent pathway, when phosphorylated on Tyr-348 and Tyr-352. Thus the differential phosphorylation of Syk can determine the pathway by which BCR is coupled to the regulation of intracellular calcium ion

Product Info

Amount :	50 μ l / 100 μ l
Content :	Supplied at 1.0mg/mL in phosphate buffered saline (without Mg ²⁺ and Ca ²⁺), pH 7.4, 150mM NaCl, 0.02% sodium azide and 50% glycerol.
Storage condition :	Store the antibody at 4°C, stable for 6 months. For long-term storage, store at -20°C. Avoid repeated freeze and thaw cycles.

Application Note

Predicted MW: 72kd, Western blotting: 1:500~1:1000, Immunohistochemistry: 1:50~1:100, Immunofluorescence: 1:100~1:200

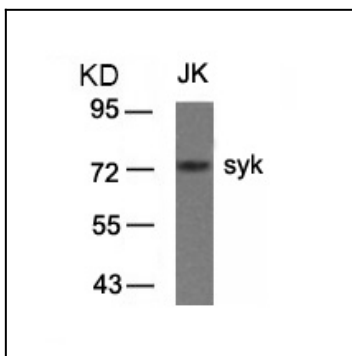


Figure 1: Western blot analysis of extracts from JK cells using syk(Ab-323) Antibody 35-1748 .

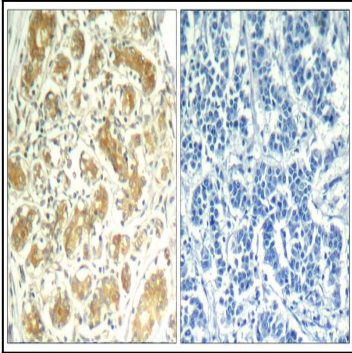


Figure 2: Immunohistochemical analysis of paraffin-embedded human breast carcinoma tissue using syk(Ab-323) Antibody 35-1748 (left) or the same antibody preincubated with blocking peptide(right).

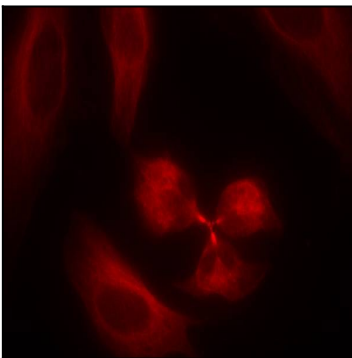


Figure 3: Immunofluorescence staining of methanol-fixed HeLa cells using syk(Ab-323) Antibody 35-1748 .