

### 35-1746: Polyclonal Antibody to CDK6 (Ab-24)

<b>Clonality :</b>	Polyclonal
<b>Application :</b>	WB,IHC
<b>Reactivity :</b>	Human,Mouse,Rat
<b>Gene :</b>	CDK6
<b>Gene ID :</b>	1021
<b>Uniprot ID :</b>	Q00534
<b>Format :</b>	Purified
<b>Alternative Name :</b>	Serine/threonine-protein kinase PLSTIRE
<b>Isotype :</b>	Rabbit IgG
<b>Immunogen Information :</b>	Peptide sequence around aa.22~26 (G-A-Y-G-K) derived from Human CDK6.

#### Description

Probably involved in the control of the cell cycle. Interacts with D-type G1 cyclins.

#### Product Info

<b>Amount :</b>	50 µl / 100 µl
<b>Content :</b>	Supplied at 1.0mg/mL in phosphate buffered saline (without Mg <sup>2+</sup> and Ca <sup>2+</sup> ), pH 7.4, 150mM NaCl, 0.02% sodium azide and 50% glycerol.
<b>Storage condition :</b>	Store the antibody at 4°C, stable for 6 months. For long-term storage, store at -20°C. Avoid repeated freeze and thaw cycles.

#### Application Note

Predicted MW: 36kd, Western blotting: 1:500~1:1000, Immunohistochemistry: 1:50~1:100

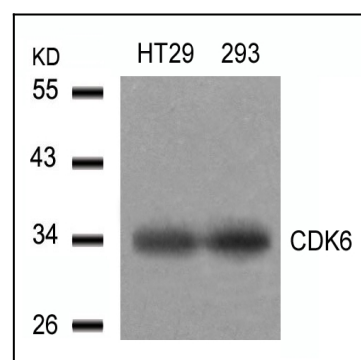


Figure 1: Western blot analysis of extracts from HT29 and 293 cells using CDK6(Ab-24) Antibody 35-1746 .

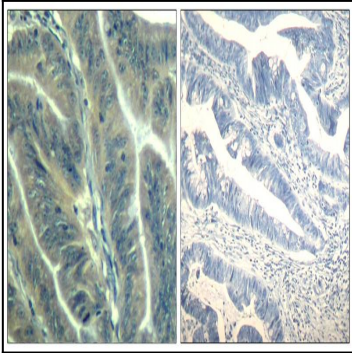


Figure 2: Immunohistochemical analysis of paraffin-embedded human colon carcinoma tissue using CDK6(Ab-24) Antibody 35-1746 (left) or the same antibody preincubated with blocking peptide(right).