

35-1744: Polyclonal Antibody to Cyclin E1 (Ab-395)

Clonality :	Polyclonal
Application :	IHC
Reactivity :	Human
Gene :	CCNE1
Gene ID :	898
Uniprot ID :	P24864
Format :	Purified
Alternative Name :	CCNE,CCNE1
Isotype :	Rabbit IgG
Immunogen Information :	The antiserum was produced against synthesized non-phosphopeptide derived from human Cyclin E1 around the phosphorylation site of threonine 395 (L-L-TP-P-P).

Product Info

Amount :	50 μ l / 100 μ l
Content :	1.0mg/ml, Rabbit IgG in phosphate buffered saline (without Mg ²⁺ and Ca ²⁺), pH 7.4, 150mM NaCl, 0.02% sodium azide and 50% glycerol.
Storage condition :	Store the antibody at 4°C, stable for 6 months. For long-term storage, store at -20°C. Avoid repeated freeze and thaw cycles.

Application Note

IHC: 1:50~1:100

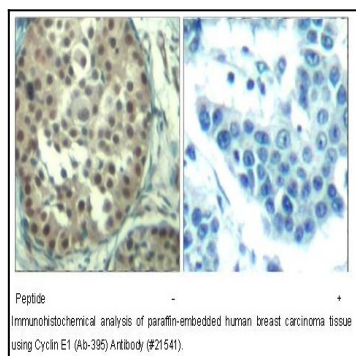


Figure 1: Immunohistochemical analysis of paraffin-embedded human breast carcinoma tissue using Cyclin E1 (Ab-395) Antibody (35-1744).