

## 35-1738: Polyclonal Antibody to ABL1/2 (Ab-393/439)

<b>Clonality :</b>	Polyclonal
<b>Application :</b>	WB
<b>Reactivity :</b>	Human,Mouse
<b>Gene :</b>	ABL1
<b>Gene ID :</b>	25
<b>Uniprot ID :</b>	P00519/P42684
<b>Format :</b>	Purified
<b>Alternative Name :</b>	ABL, v-abl, c-ABL, p150, JTK7
<b>Isotype :</b>	Rabbit IgG
<b>Immunogen Information :</b>	Peptide sequence around aa.391~395/437~441(D-T-Y-T-A) derived from Human ABL1/2.

### Description

Regulates cytoskeleton remodeling during cell differentiation, cell division and cell adhesion. Localizes to dynamic actin structures, and phosphorylates CRK and CRKL, DOK1, and other proteins controlling cytoskeleton dynamics. Regulates DNA repair potentially by activating the proapoptotic pathway when the DNA damage is too severe to be repaired. Phosphorylates PSMA7 that leads to an inhibition of proteasomal activity and cell cycle transition blocks. Wang, J.Y. et al. (2000) Oncogene 19, 5643-5650. Danial, N.N. et al. (2000) Oncogene 19, 2523-2531. Brasher, B.B. et al. (2000) J. Biol. Chem. 275, 35631-35637. Pluk, H. et al. (2002) Cell 108, 247-259.

### Product Info

<b>Amount :</b>	50 $\mu$ l / 100 $\mu$ l
<b>Content :</b>	Supplied at 1.0mg/mL in phosphate buffered saline (without Mg <sup>2+</sup> and Ca <sup>2+</sup> ), pH 7.4, 150mM NaCl, 0.02% sodium azide and 50% glycerol.
<b>Storage condition :</b>	Store the antibody at 4°C, stable for 6 months. For long-term storage, store at -20°C. Avoid repeated freeze and thaw cycles.

### Application Note

Predicted MW: 135 210kd, Western blotting: 1:500~1:1000

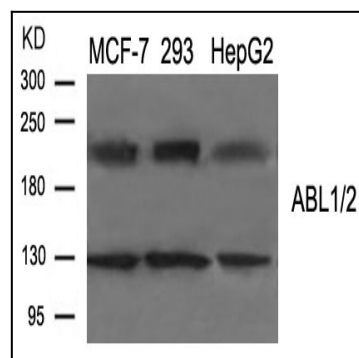


Figure 1: Western blot analysis of extract from MCF-7, 293, HepG2 cells using ABL1/2 (Ab-393/439) Antibody 35-1738 .