

35-1737: Polyclonal Antibody to CDC2 (Ab-19)

| | |
|--------------------------------|--|
| Clonality : | Polyclonal |
| Application : | IHC |
| Reactivity : | Human |
| Gene : | CDK1 |
| Gene ID : | 983 |
| Uniprot ID : | P06493 |
| Format : | Purified |
| Alternative Name : | CDC28, CDC2A, CDK1, Cyclin-dependent kinase 1, Cell division control protein 2 homolog, p34 protein kinase |
| Isotype : | Rabbit IgG |
| Immunogen Information : | Peptide sequence around aa.17~21 (V-V-Y-K-G) derived from Human CDC2. |

Description

Plays a key role in the control of the eukaryotic cell cycle. It is required in higher cells for entry into S-phase and mitosis. p34 is a component of the kinase complex that phosphorylates the repetitive C-terminus of RNA polymerase II.

Product Info

| | |
|----------------------------|--|
| Amount : | 50 μ l / 100 μ l |
| Content : | Supplied at 1.0mg/mL in phosphate buffered saline (without Mg ²⁺ and Ca ²⁺), pH 7.4, 150mM NaCl, 0.02% sodium azide and 50% glycerol. |
| Storage condition : | Store the antibody at 4°C, stable for 6 months. For long-term storage, store at -20°C. Avoid repeated freeze and thaw cycles. |

Application Note

Predicted MW: 34kd, Immunohistochemistry: 1:50~1:100

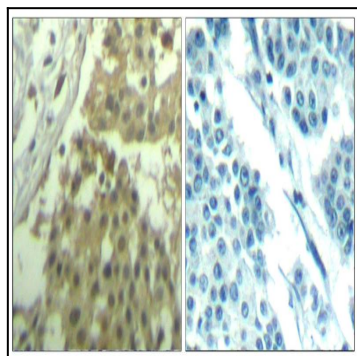


Figure 1: Immunohistochemical analysis of paraffin-embedded human breast carcinoma tissue using CDC2(Ab-19) Antibody 35-1737 (left) or the same antibody preincubated with blocking peptide(right).